



INSTRUCTION MANUAL

RACDP2200

Wallpaper Stripper



BUILDER SAS

32, rue Aristide Bergès -ZI 31270 Cugnaux –France



IMPORTANT: Please read the instruction manual before using.

1. SAFETY WARNINGS FOR STEAM PRODUCTS

Before using this device, please read this manual carefully and keep it for future use. If you pass this device on to someone else, pass this manual as well.

- Appliances can be used by persons with reduced physical, sensory or mental capabilities or lack of experience and knowledge if they have been given supervision or instruction concerning use of the appliance in a safe way and if they understand the hazards involved. Children shall not play with the appliance.
- The appliance shall not be left unattended while it is connected to the supply mains. Keep children and pets away from the device during use.
- The filling aperture shall not be opened during use. Follow the instructions given in this manual for the safe filling of the water tank.
- The appliance is not to be used if it has been dropped, if there are visible signs of damage or if it is leaking
- Keep the appliance out of reach of children when it is energized or cooling down
- The liquid or steam must not be directed towards equipment containing electrical components, such as the interior of ovens.



- Caution! Danger of scalding
- The appliance must be unplugged after use and before maintenance by the user.
- The plug must be removed from the socket-outlet before cleaning or maintaining the device.
- If the supply cord is damaged, it must be replaced by the manufacturer, its service agent or similarly qualified persons in order to avoid a hazard
- CAUTION: Make sure the device is turned off before removing the accessory.
- The device must not be submerged in water.
- Refer to CLEANING AND MAINTENANCE section for cleaning and descaling instructions.
- This appliance is designed for indoor use only.
- Fill the device only with water.
- Inspect the unit regularly for signs of damage. Do not use a damaged device. Do not try to repair the device yourself. The repair must only be made by the manufacturer, its after-sales service or persons of similar qualification in order to avoid a danger.
- Remove all packing materials before using the appliance. Keep packaging materials out of the reach of children, as these materials can be dangerous.

- Check that the supply voltage indicated on the nameplate corresponds to the voltage of your home.
- Do not expose the device to heat. Do not place the device near heat sources such as a stove or heater.
- Attention! Always use shoes when using the steam mop! The floor becomes hot when using the appliance.
- Do not direct steam at people, animals, electrical appliances or electrical outlets.
- Do not remove or fill the water tank while the steam mop is on.
- Please refer to the instructions in this manual for the type and amount of fluid to use.
- Surfaces are likely to be hot during use.
- Do not spray to any aim in same position for more than 5 sec.
- Do not put heavy weight on power cord.
- Do not touch directly the steam.
- Do not drain the appliance when it is connected to water mains.
- Do not use the appliance when there is no water in water tank. Always fill the tank before use the tool.
- Use the appliance in a ventilated room









- Always put the children lock when the appliance is not used.
- Let the appliance cool before change, replace or remove any parts.
- Do not spray the steam to clean glass in the same position more than 2 seconds.
- Do not clean window if temperature is lower than 0 °C.
- Revolve the safety valve before power on or hot water will pour out
- During production, each appliance is tested to ensure the quality of the finished product. It is therefore possible that there is water residue inside the device.

2. SPECIAL SAFETY FOR WALLPAPER STEAM STRIPPER

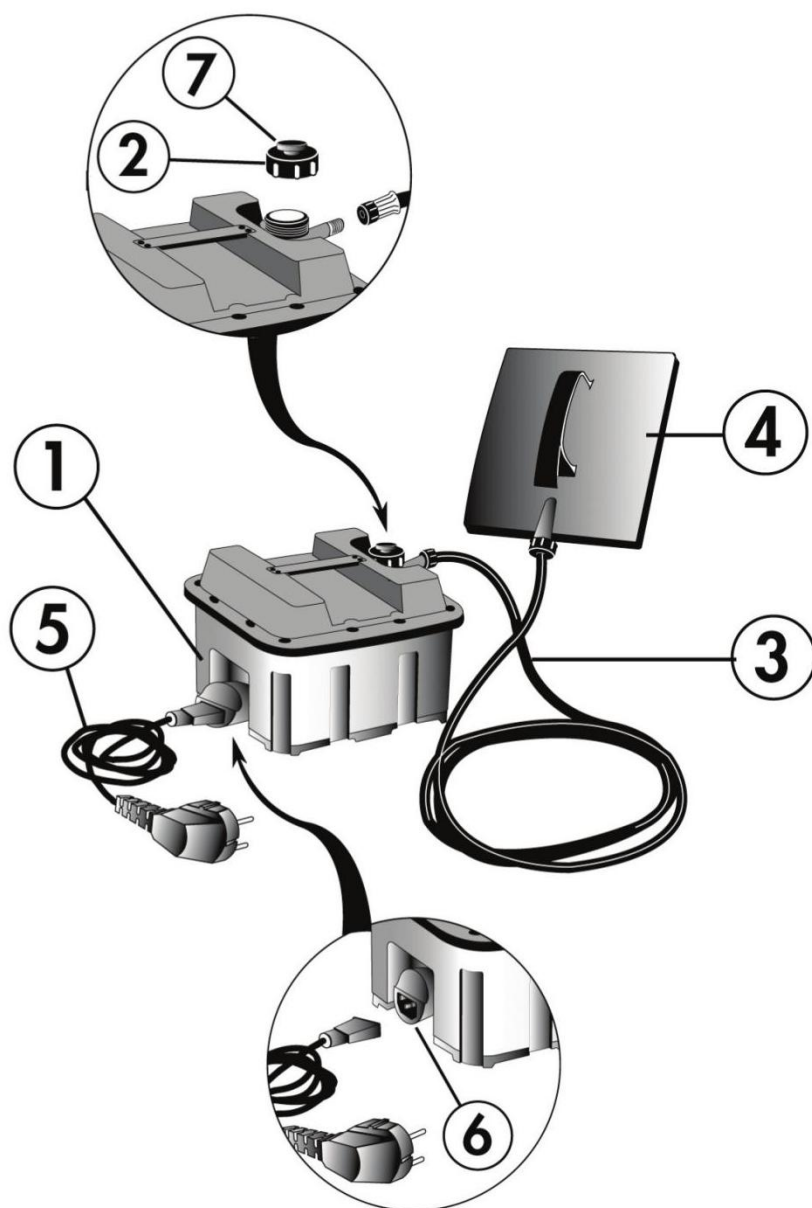
- Do not handle the product with wet hands. Do not use the wallpaper stripper in wet environments or on wet floors.
- Fill the water tank, and tighten safety cap securely before connecting to power supply.
- Do not tilt the product by more than 45 degrees. Tilting the product too far may allow boiling water to be ejected.

- Never direct steam towards people, animals, or electrical equipment.
- Always disconnect power supply before filling or cleaning and after use.
- Allow the product to cool fully before opening tank cap.
- Do not use any form of rust or calcium remover in this product.
- Do not overfill the water tank.
- Disconnect from power on completion of the task.
- This appliance shall not be left unattended while it is connected to the mains power supply.
- Do not remove the tank cap during use, or whilst the machine is connected to the mains.
- The appliance is not to be used if it has been dropped, or if there are visual signs of damage.
- Keep the appliance out of reach of children whilst it is energised or cooling down.

3. EXPLANATION OF SYMBOLS:

	<p>Danger, 100°C hot water.</p>
	<p>Hot surface, not touch by hand</p>
	<p>Attention, Don't use the steam plate on the top, the steam water will be driped!</p>
	<p>STEAM, Danger of scalding!</p>
	<p>Keep children and pets away from the device during use.</p>
	<p>To reduce the risk of injury, the user must read and understand this manual before using this product.</p>
	<p>Conforms to relevant safety standards</p>
	<p>Do not dispose of old appliances with domestic rubbish</p>

4. PRODUCT DESCRIPTION



1

1	Water Tank
2	Tank Cap
3	Hose (3M)
4	Steam Plate (2pcs of Black plate size:28x20cm, 14.6x10cm)
5	Rubber cable (1.5M)
6	Power connection
7	Safety Valve

5. INTENDED USE

Mains-powered steam cleaner capable of removing all types of wallpaper without the need for harmful chemicals.

6. UNPACKING YOUR TOOL

- Carefully unpack and inspect your tool. Fully familiarise yourself with all its features and functions.
- Ensure that all parts of the tool are present and in good condition. If any parts are missing or damaged, have such parts replaced before attempting to use this tool.

7. BEFORE USE

WARNING: Ensure the tool is disconnected from the power supply before attaching or changing any accessories, or making any adjustments.

ASSEMBLY

- Attach the hose (3) to the **Water Tank (1)** by gripping the hose end and installing it to the **Safety Valve (7)**.
- Grip the hose firmly and fasten it to the **Steam Plate (4)**.

NOTE: Ensure that the hose is securely attached to both the tank and steam pad; otherwise it may lead to boiling water leaking onto the work area.

FILLING

- Ensure that the product is unplugged and cool and that the steam has been released through the **Steam Plate (4)**.
- Place the product on a level surface then unscrew the **Tank Cap (2)**.
- Fill the **Water Tank (1)** to the required level, maximum capacity 4.5L.
- Securely fasten the **Tank Cap (2)** to the **Water Tank (1)**.

NOTE: DO NOT exceed the maximum capacity of the water tank.

8. OPERATION

WARNING: ALWAYS wear eye protection, adequate respiratory and hearing protection, as well as suitable gloves, when working with this tool.

WARNING: Caution when stripping wallpaper from the delicate surfaces. The high temperature steam may cause damage to the base surface.

IMPORTANT: When in use, **ALWAYS** keep the water level in between the min and max line. **DO NOT** overfill. **DO NOT** let the device run dry. If the device runs dry it may cause damage. Monitor the water level consistently during use.

Wallpaper Stripper Tips

WARNING: When the **Water Tank (1)** is full the wallpaper stripper has an approximate operating time of 70 minutes. **DO NOT** allow the **Water Tank (1)** to run dry or run the machine longer than 70 minutes.

- Use a wallpaper perforator (not included) on the wall prior to steam, to help steam to penetrate the surface.

- When the wallpaper stripper has reached normal operating temperature, hold the **Steam Plate** (4) against the wall. Do not hold the **Steam Plate** (4) against the wallpaper for longer than 10 seconds.
- Use a suitable scraper to remove the wallpaper.
- When the wallpaper stripper is running low on water, disconnect from the mains and allow to cool before opening the **Tank Cap** (2) and refilling.

9. MAINTENANCE

- **WARNING:** Always remove the plug from the mains power supply before carrying out any maintenance/cleaning.
- Keep your machine clean at all times. Dirt and dust will cause internal parts to wear quickly, shortening the machine's service life.
- Clean the body of your machine with a soft brush or dry cloth.
- Regularly check that all the fixing screws are tight.
- Inspect the supply cord of the tool, prior to each use, for damage or wear. Repairs should be carried out by any authorised.

10. CLEANING

- Keep stripper clean at all times. Dirt and dust will cause internal parts to wear quickly and shorten product life span. Clean the body of the machine with a soft brush or dry cloth.
- Clean the casing with a soft damp cloth using a mild detergent. **DO NOT** use alcohol, petrol or strong chemical cleaning agents.
- Never use caustic agents to clean plastic components.

11. STORAGE

- Store this tool in a secure dry place, out of the reach of children.

12. SPECIFICATIONS

- Voltage: 220-240~ 50Hz
- Power: 1850-2200W
- Capacity:4.5L/max,
- Working Time:70min,
- Degree of protection: IPX4
- Protection class: Class I

13. DISPOSAL



Electrical products should not be discarded with household products. According to the European Directive 2012/19/EU on waste electrical and electronic equipment and its implementation into national law, electrical products used must be collected separately and disposed of at collection points provided for this purpose. Talk with your local authorities or dealer for advice on recycling.

14. EC DECLARATION OF CONFORMITY



EC Declaration of conformity

BUILDER SAS

32, rue Aristide Bergès - ZI 31270 Cugnaux – France

Declares that the machine indicated below:

Wallpaper Stripper

Model: RACDP2200

Serial number: [20210109221-20210110420](#)

Is in conformity with the European Directives:

LVD Directive 2014/35/EU

EMC Directive 2014/30/EU

ROHS Directive: (EU) 2015/863 amending 2011/65/EU

This product is also in conformity with the following standards:

EN 60335-1:2012 +A11:2014 + A13:2017 + A1:2019 + A14:2019 + A2:2019

[EN 60335-2-54:2008+A11:2012+A1:2015](#)

EN 62233:2008

EN 55014-1:2017; EN 55014-2:2015

EN61000-3-2:2014 EN 61000-3-3:2013,

Philippe MARIE / PDG

A handwritten signature in black ink, appearing to be 'Philippe Marie', written over a circular stamp or mark.

Cugnaux, le **01/01/2021**

15. WARRANTY



WARRANTY

The manufacturer guarantees the product against defects in material and workmanship for a period of 2 years from the date of the original purchase. The warranty only applies if the product is for household use. The warranty does not cover breakdowns due to normal wear and tear.

The manufacturer agrees to replace parts identified as defective by the designated distributor. The manufacturer does not accept responsibility for the replacement of the machine, in whole or in part, and/or ensuing damage.

The warranty does not cover breakdowns due to:

- insufficient maintenance.
- abnormal assembly, adjustment or operations of the product.
- parts subject to normal wear and tear.

The warranty does not extend to:

- shipping and packaging costs.
- using the tool for a purpose other than that for which it was designed.
- the use and maintenance of the machine done in a manner not described in the user manual.

Due to our policy of continuous product improvement, we reserve the right to alter or change specifications without notice. Consequently, the product may be different from the information contained therein, but a modification will be undertaken without notice if it is recognized as an improvement of the preceding characteristic.

READ THE MANUAL CAREFULLY BEFORE USING THE MACHINE.

When ordering spare parts, please indicate the part number or code, you can find this in the spare parts list in this manual. Keep the purchase receipt; without it, the warranty is invalid. To help you with your product, we invite you to contact us by phone or via our website:

- **+33 (0)9.70.75.30.30**
- **<https://services.swap-europe.com/contact>**

You must create a "ticket" via the web platform.

- Register or create your account.
- Indicate the reference of the tool.
- Choose the subject of your request.
- Describe your problem.
- Attach these files: invoice or sales receipt, photo of the identification plate (serial number), photo of the part you need (for example: pins on the transformer plug which are broken).



16. PRODUCT FAILURE

WHAT TO DO IF MY MACHINE BREAKS DOWN?

If you bought your product in a store:

a) Empty the fuel tank.

b) Make sure that your machine is complete with all accessories supplied, and clean! If this is not the case, the repairer will refuse the machine.

Go to the store with the complete machine and with the receipt or invoice.

If you bought your product on a website:

a) Empty the fuel tank.

b) Make sure that your machine is complete with all accessories supplied, and clean! If this is not the case, the repairer will refuse the machine.

c) Create a SWAP-Europe service ticket on the site: <https://services.swap-europe.com> When making the request on SWAP-Europe, you must attach the invoice and the photo of the nameplate (serial number).

d) Contact the repair station to make sure it is available before dropping off the machine.

Go to the repair station with the complete machine packed, accompanied by the purchase invoice and the station support sheet downloadable after the service request is completed on the SWAP-Europe site

For machines with engine failure from manufacturers BRIGGS & STRATTON, HONDA and RATO, please refer to the following instructions.

Repairs will be done by approved engine manufacturers of these manufacturers, see their site:

- <http://www.briggsandstratton.com/eu/fr>
- <http://www.honda-engines-eu.com/fr/service-network-page;jsessionid=5EE8456CF39CD572AA2AEEDFD290CDAE>
- <https://www.rato-europe.com/it/service-network>

Please keep your original packaging to allow for after-sales service returns or pack your machine with a similar cardboard box of the same dimensions.

For any question concerning our after-sales service you can make a request on our website <https://services.swap-europe.com>

Our hotline remains available at +33 (9) 70 75 30 30.



17. WARRANTY EXCLUSIONS

THE WARRANTY DOES NOT COVER:

- Start-up and setting up of the product.
- Damage resulting from normal wear and tear of the product.
- Damage resulting from improper use of the product.
- Damage resulting from assembly or start-up not in accordance with the user manual.
- Breakdowns related to carburetion beyond 90 days and fouling of carburetors.
- Periodic and standard maintenance events.
- Actions of modification and dismantling that directly void the warranty.
- Products whose original authentication marking (brand, serial number) has been degraded, altered or withdrawn.
- Replacement of consumables.
- The use of non-original parts.
- Breakage of parts following impacts or projections.
- Accessories breakdowns.
- Defects and their consequences linked to any external cause.
- Loss of components and loss due to insufficient screwing.
- Cutting components and any damage related to the loosening of parts.
- Overload or overheating.
- Poor power supply quality: faulty voltage, voltage error, etc.
- Damages resulting from the deprivation of enjoyment of the product during the time necessary for repairs and more generally the costs related to the immobilization of the product.
- The costs of a second opinion established by a third party following an estimate by a SWAP-Europe repair station
- The use of a product which would show a defect or a breakage which was not the subject of an immediate report and/or repair with the services of SWAP-Europe.
- Deterioration linked to transport and storage*.
- Launchers beyond 90 days.
- Oil, petrol, grease.
- Damages related to the use of non-compliant fuels or lubricants.

* In accordance with transport legislation, damage related to transport must be declared to carriers within 48 hours maximum after observation by registered letter with acknowledgement of receipt.

This document is a supplement to your notice, a non-exhaustive list.

Attention: all orders must be checked in the presence of the delivery person. In case of refusal by the delivery person, it you must simply refuse the delivery and notify your refusal.

Reminder: the reserves do not exclude the notification by registered letter with acknowledgement within 72 hours.

Information:

Thermal devices must be wintered each season (service available on the SWAP-Europe site). Batteries must be charged before being stored.