

Garden Blower Vacuum

RAC2600EB-UK

WARNING: READ THIS MANUAL CAREFULLY BEFORE USE IT

BUILDER SAS
32, rue Aristide Bergès - ZI 31270 Cugnaux – France
MADE IN PRC 2018



Type designation	Rated input power	Rated no-load speed	Adjustable speed or not
RAC2600EB-UK	3000W	15000/min ⁻¹	NOT

SPECIFICATION

Rated Voltage	230V-240V~50Hz
Blower velocity	250 km/h
Maximum blower air output	10.7m ³ /min
Collect bag capacity	40L
Weight	2.7Kg

NOISE AND VIBRATION DATA

A weighted sound pressure level: 87.4 dB(A)
A weighted sound power level: 98.07 dB(A)
Guarantee sound power level: 99 dB(A)
Typical weight
Horizontal vibration: 1.66 m/s² K=1.5 m/s²

* The sound intensity level for operator may exceed 85dB(A) and ear protection measures are necessary.

EXPLANATION FOR SYMBOLS



This product is double insulated electrically



Read instruction manual before operating or attempting any maintenance work



Conforms to all relevant EC Directives



Denotes risk of personal injury, loss of life, or damage to the tool in case of non-observance



Do not use in the rain or leave outdoors while it is raining.



SWICH OFF:Remove plug from mains before cleaning or maintance.



Wear eye protection wear the hearing protection wear safety helmet



Risk of projections:keep bystanders away

**IMPORTANT
READ CAREFULLY BEFORE USE
KEEP FOR FUTURE REFERENCE**

Safe operating practices for hand-held mains-operated electrical garden vacuums, and garden blower/vacuums with or without shredding means and garden blowers

Training

- a) Read the instructions carefully. Be familiar with the controls and the correct use of the machine.
- b) Never allow children or people unfamiliar with these instructions to use the machine. Local regulations can restrict the age of the operator.
- c) Keep in mind, that the operator or user is responsible for accidents or hazards occurring to other people or their property.

Preparation

- a) Obtain ear protection and safety glasses. Wear them at all times while operating the machine.
- b) While operating the machine always wear substantial footwear and long trousers. Do not operate the machine when barefoot or wearing open sandals. Avoid wearing clothing that is loose fitting or that has hanging cords or ties.
- c) Do not wear loose clothing or jewellery that can be drawn into the air inlet. Keep long hair away from the air inlets.
- d) Operate the machine in a recommended position and only on a firm, level surface.
- e) Do not operate the machine on a paved or gravel surface where ejected material could cause injury.
- f) Before using, always visually inspect to see, that the shredding means, shredding means bolts and other fasteners are secure, the housing is undamaged and that guards and screens are in place. Replace worn or damaged components in sets to preserve balance. Replace damaged or unreadable labels.
- g) Before use, check the supply and extension cord for signs of damage or aging. If the cord becomes damaged during use, disconnect the cord from the supply immediately. **DO NOT TOUCH THE CORD BEFORE DISCONNECTING THE SUPPLY.** Do not use the machine if the cord is damaged or worn.
- h) Never operate the machine while people, especially children, or pets are nearby.

Operation

- a) Before starting the machine, make certain that the feeding chamber is empty.
- b) Keep your face and body away from the feed intake opening.
- c) Do not allow hands or any other part of the body or clothing inside the feeding chamber, discharge chute, or near any moving part.
- d) Keep proper balance and footing at all times. Do not overreach. Never stand at a higher level than the base of the machine when feeding material into it.
- e) Always stand clear of the discharge zone when operating this machine.
- f) When feeding material into the machine be extremely careful that pieces of metal, rocks, bottles, cans or other foreign objects are not included.
- g) If the cutting mechanism strikes any foreign objects or if the machine should start making any unusual noise or vibration, immediately shut off the power source and allow the machine to stop. Disconnect the machine from the supply and take the following steps before restarting and operating the machine:
 - i) inspect for damage;
 - ii) replace or repair any damaged parts;
 - iii) check for and tighten any loose parts.
- h) Do not allow processed material to build up in the discharge zone; this may prevent proper discharge and can result in kickback of material through the intake opening.
- i) If the machine becomes clogged, shut-off the power source and disconnect the machine from supply before cleaning debris.
- j) Never operate the machine with defective guards or shields, or without safety devices, for example debris collector in place.
- k) Keep the power source clean of debris and other accumulations to prevent damage to the power source or possible fire.
- l) Do not transport this machine while the power source is running.

- m) Stop the machine, and remove plug from the socket. Make sure that all moving parts have come to a complete stop
- whenever you leave the machine,
 - before clearing blockages or unclogging chute,
 - before checking, cleaning or working on the machine.
- n) Do not tilt the machine while the power source is running.

Maintenance and storage

- a) When the machine is stopped for servicing, inspection, or storage, or to change an accessory, shut off the power source, disconnect the machine from the supply and make sure that all moving parts are come to a complete stop. Allow the machine to cool before making any inspections, adjustments, etc. Maintain the machine with care and keep it clean.
- b) Store the machine in a dry place out of the reach of children.
- c) Always allow the machine to cool before storing.
- d) When servicing the shredding means be aware that, even though the power source is switched off due to the interlock feature of the guard, the shredding means can still be moved.
- e) Replace worn or damaged parts for safety. Use only genuine replacement parts and accessories.
- f) Never attempt to override the interlocked feature of the guard.

Additional safety instructions for units with bagging attachments
Switch-off the machine before attaching or removing the bag.

Recommendation

The machine should be supplied via a residual current device (RCD) with a tripping current of not more than 30 mA.

Additional instructions

- Do not allow children, people with reduced physical, sensory or mental abilities, or those with no experience and knowledge or people who do not know these instructions to use the machine. Local regulations may restrict the age of the operator.
- Do not use the machine when people, especially children, or pets are nearby.
- Remember that the operator or user is responsible for accidents or hazards that occur to people or their property
- Before connecting the machine, check:
 - If the tool and cable are not damaged. If anything is damaged, do not use the machine and return it to your dealer for inspection and repair.
 - The voltage marked on the nameplate of the tool corresponds to that of your electrical installation.
- Do not use accessories other than those recommended by the manufacturer; Accessories not recommended may damage the unit and / or cause injury.
- Do not disassemble the tool yourself. Any disassembly, repair or inspection must be performed by qualified personnel only.
- Use the tool fully assembled and secure. Before use, check that the guards and safety devices are in place.
- When operating the machine, always wear protective equipment including: face shield, visor or goggles, ear protection, helmet, gloves, non-slip shoes and protective clothing.
- Always carry the machine by its handle; Never use the cord or any other part of the machine.
- Do not use the machine when you are tired, under the influence of alcohol, drugs or when you are sick.
- Use the tool to vacuum and blow leaves and similar materials. Do not blow flammable materials, cigarette butts and materials that may damage the unit.
- Do not use the appliance to suck up water or wet debris.
- Always use the machine with the collection bag.
- Avoid using the machine in bad weather, especially when there is a risk of thunderstorms and lightning.
- In the event of an accident, stop using the machine immediately. Turn it off and unplug it to check the problem. Do not use the machine when it is damaged.
- Do not use the tool in an area where there is insufficient ventilation. Gas emissions can cause injury.

- Do not use the tool in humid places.
- Do not use the tool in the presence of flammable liquids or gases.
- Do not use the product with damaged guards or shields, shields or screens not in place.
- Do not bend. Keep a good balance at all times.
- Keep handles dry, clean and free of oil and grease.
- Use and handle the machine with care
- Do not put your body, clothing or shoes near the air opening.
- Do not lift the tool while it is running.
- Do not point the tool in front of people; This can lead to accidents and injuries.
- Do not place any objects inside the tube and inside the tool.
- Before using the machine and after a shock, check for signs of wear or damage. Please make repairs if necessary.
- Inspect and maintain the product regularly. Repairs should only be performed by an authorized service center or qualified specialist.
- Children should not play with plastic bags, sheets and small parts! Keep them out of the reach of children. There is a risk of suffocation!
- Do not use the product on a slippery surface.
- Do not use the product on steep, slippery slopes. If you need to work on the slopes, use extreme care and pay attention to your feet. Please wear non-slippery shoes.
- When planning your work schedule, allow enough time for rest. Limit continuous use of the device, for example, use 30 to 40 minutes per session and take 10 to 20 minutes of rest between work sessions. Work a maximum of two hours a day.
- Do not connect a damaged cable or touch a damaged cable before it is disconnected from the power supply; Damaged cables may cause contact with live parts.
- Keep extension cords away from hazardous moving parts to prevent damage to cords that may cause contact with live parts.
- When a cable is damaged or entangled, stop using the tool immediately. Turn off the tool, let it cool down and unplug it securely.
- Do not overreach and keep the balance at all times; always be sure of the footing on slopes. Walk, never run.
- Do not touch moving hazardous parts before the machine is disconnected from the mains and the moving hazardous parts have come to a complete stop.
- The extension cable shall not be lighter than the standardised code H05 RN-F/H05 VV-F. See your retailer or manufacturer for more advice.
- never to operate the machine with defective guards or shields, or without safety devices, or if the cord is damaged or worn;
- Do not connect a damaged cord to the supply or touch a damaged cord before it is disconnected from the supply for the reason that damaged cords can lead to contact with live parts;
- Connect the machine only to a supply circuit protected by a residual current device (RCD) with a tripping current of not more than 30 mA.
- Avoid using the machine in bad weather conditions especially when there is a risk of lightning.

Residual risks

Even if you use this product in accordance with all safety requirements, the risk of injury and damage remain. The following hazards may occur in the structure and design of this product:

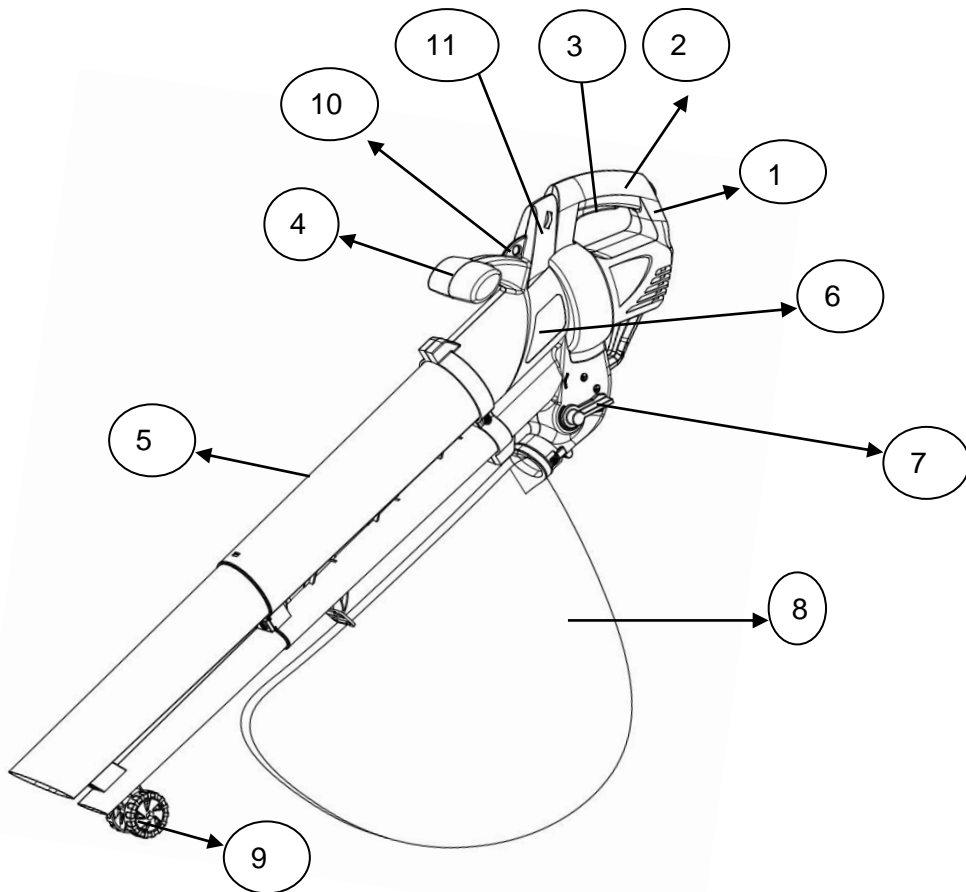
- a. There is adverse health consequences resulting from the emission of vibrations if the product is used for long periods or if it is not properly handled and properly maintained.
- b. Risk of injury to persons and property caused by projectiles.
- c. Prolonged use of this product may expose the operator to vibration and may produce a so-called "white finger" disease. To reduce the risk, wear gloves and keep your hands warm.
- d. If any of the symptoms of "white finger syndrome" occur, seek medical attention immediately. "White finger" symptoms include numbness, loss of sensitivity, tingling, tingling, and pain, loss of strength, colour changes, or skin condition. These symptoms usually appear on the fingers, hands or wrists. The risk increases at low temperature.
- e. Inhalation of particles of blown / aspirated material
- f. Involuntary projections
- g. Contact with foreign bodies
- h. Contact with the tool in operation
- i. Hearing loss in the absence of proper hearing protection

Intended use

- This vacuum blower is intended to be used for the vacuuming and the blowing of leaves, dust, and similar little materials. It must not to be used for vacuuming and blowing water, chemical products, flammable material, metal or wood and others dangerous objects.
- This product is intended for private domestic use only. It must be use outdoor.
- This product is not intended to be used in a closed room and places where exhausted gas and flames can be present.
- The use of this product in case of rain or humid environment is prohibited.
- Any other use might lead to damage of the appliance, property or personal injury.

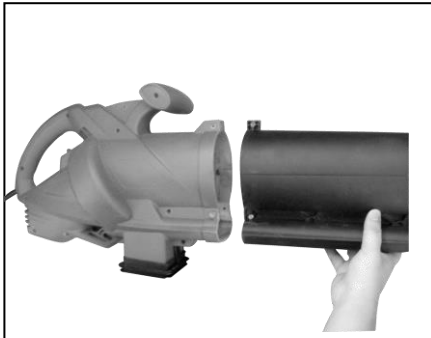
KNOW YOUR PRODUCT

1. Cord guard
2. Main handle
3. On/off switch
4. Additional handle
5. Blower tube
6. Motor housing
7. Function switch
8. Collection bag
9. Wheel
10. Shoulder harness
11. Speed control governor



Assembly instructions(Fig.1)

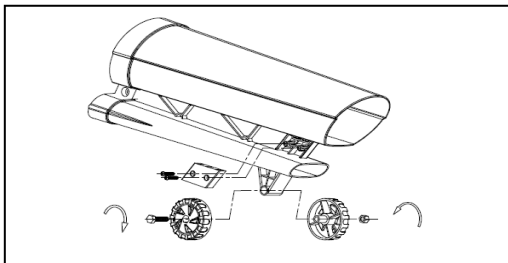
- 1) Slide the upper tube into the motor housing, then tighten the screws and make sure the tube is firmly fixed with motor housing.



- 2) Insert lower tube into upper tube and push them until they are connected firmly together then tighten the screws.



- 3) Assemble the wheels to the lower tube as following picture shows.



- 4) Attach the collect bag to the hook on upper tube and the outlet on the bottom of motor housing.

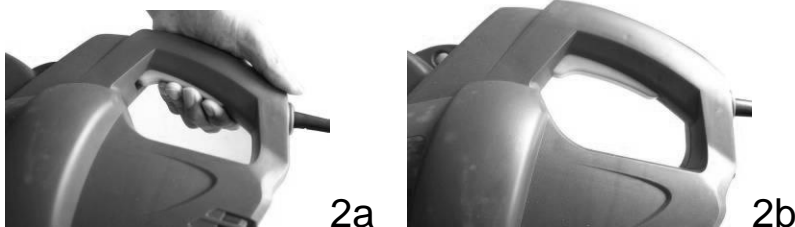
Caution: In the interests of safety the tubes should not be dismantled after they have been assembled

Operation(Fig.2)

Before starting the machine, make sure that collect bag is fitted and the shoulder harness is adjusted to a suitable working position.

- Switching on and off

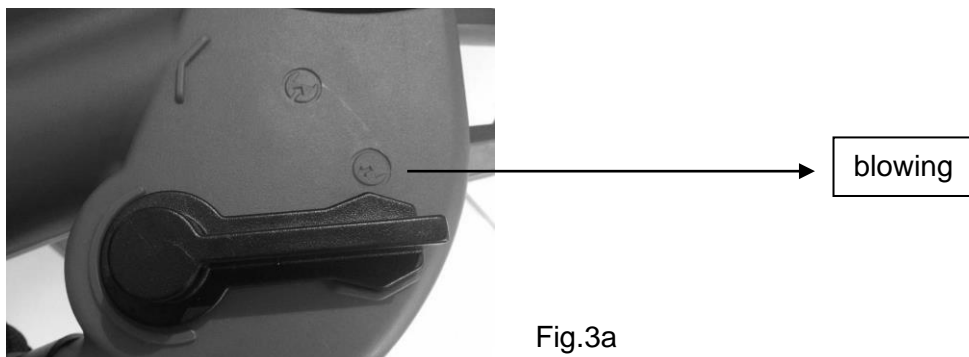
- To switch on, press the switch like (fig. 2a).
- To switch off, press the switch like (fig. 2b).



- Blowing mode(Fig. 3a)

Blow mode can be also used to clean corners, fences, walls, wooden areas or beneath cars. Be careful what you point the jet of air as it could move heavy material and cause injury or damage.

- Turn the Function switch **anticlockwise** to the position of blow mode.
- Turn the switch to on, point the jet of air in front of you and move forward slowly to gather together the leaves or to move the leaves from inaccessible areas as shown in



- Vacuum mode(Fig. 3b)

- Set the Function switch **clockwise** to the position of vacuum mode.
- Make sure that the collect bag is fitted properly.
- Hold the blower vac several centimeters over the leaves which you are going to suck up. Now switch the machine on.
- Hold the machine as shown in Fig. 4b, tilting the Blower/Suction tube slightly, and use a sweeping action to collect light debris with approximately 50mm distance between the opening of Blower/Suction tube and the floor or ground to be clean up.
- The leaves will be sucked up into the tube, chopped up and thrown into the collect bag.

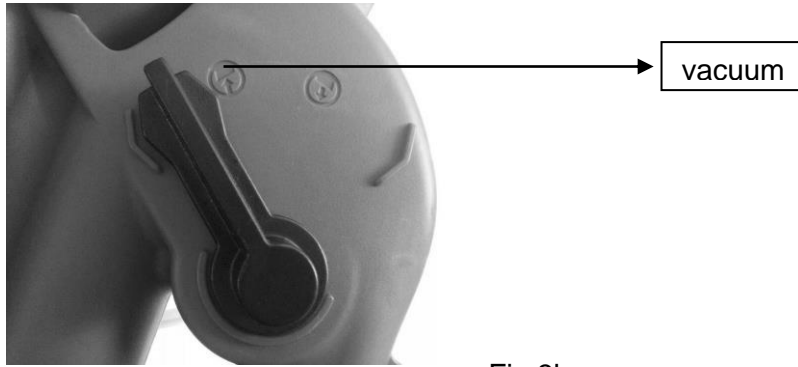


Fig.3b

When the collect bag is full, the vacuum power will be greatly reduced. When this happens, turn the switch to position “0” (off) and disconnect the plug from the electricity supply. Wait until the suction fan has stopped completely before operation. Open the zip fastener inside the bag, spread out the opening and empty it completely. If you have collected only leaves or vegetable matter, they will already have been shredded and will be ready for composting. Zip up the bag and resume work.

Note: Before re-fitting the bag, clean the inside of the exhaust opening, removing any shredded deposits. Pay special attention to the cleaning of the supporting edges of the air flow deviator on the inside of the tube.

Electronic speed control setting (Fig. 3)

Your machine complete with a speed controller to allow you adjust the air speed for various working condition.

Turn the speed controller forward to increase the motor speed and blowing/suction air speed.

MAINTENANCE

1. Place switch in “**Switch off**” position and unplug the power supply before the appliance is serviced, cleaned or maintenance is performed.
2. Keep air intake clean and air vents free of debris to avoid overheating the motor.
3. Do not use cleaning agents to clean the plastic parts of the tool. A mild detergent on a damp cloth is recommended. Water must never come into contact with the tool.
8. If the blower vibrates abnormally, stop motor immediately. Abnormal vibration usually indicates a mechanical problem continued operation could lead to injury or damage.
9. No lubrication is necessary as the motor is equipped with lifetime-lubricated bearings.
10. If the blower does not operate, turn switch to “**Switch off**” position and disconnect from power supply first, then from blower. If the blower still does not operate, contact the specialist. Do not attempt to repair it yourself. There are no serviceable parts inside.

PROTECTING THE ENVIRONMENT



Meaning of crossed –out wheeled dustbin:

Do not dispose of electrical appliances as unsorted municipal waste, use separate collection facilities.

Contact you local government for information regarding the collection systems available.

If electrical appliances are disposed of in landfills or dumps, hazardous substances can leak into the groundwater and get into the food chain, damaging your health and well-being.

When replacing old appliances with new ones, the retailer is legally obligated to take back your old appliance for disposals at least free of charge.

EC DECLARATION



EC Declaration of conformity

BUILDER SAS

32, rue Aristide Bergès - ZI 31270 Cugnaux – France declare that the machine

Designation: GARDEN BLOWER VACUUM

Model: RAC2600EB-UK

Serial number:

Is in conformity with the European Directives:

Machine Directive 2006/42EC

EMC Directive 2014/30/EU

ROHS directive 2011/65/EU

This product is also in conformity with the following standards:

EN 60335-1:2012+A11

EN 50636-2-100:2014

EN 62233:2008

EN 55014-1:2006+A1:2009+A2:2011

EN 55014-2:2015

EN 61000-3-2:2014

EN 61000-3-3:2013

Philippe MARIE / PDG

Cugnaux, le 04/12/2018

Responsible of technical file: Mr Olivier Patriarca