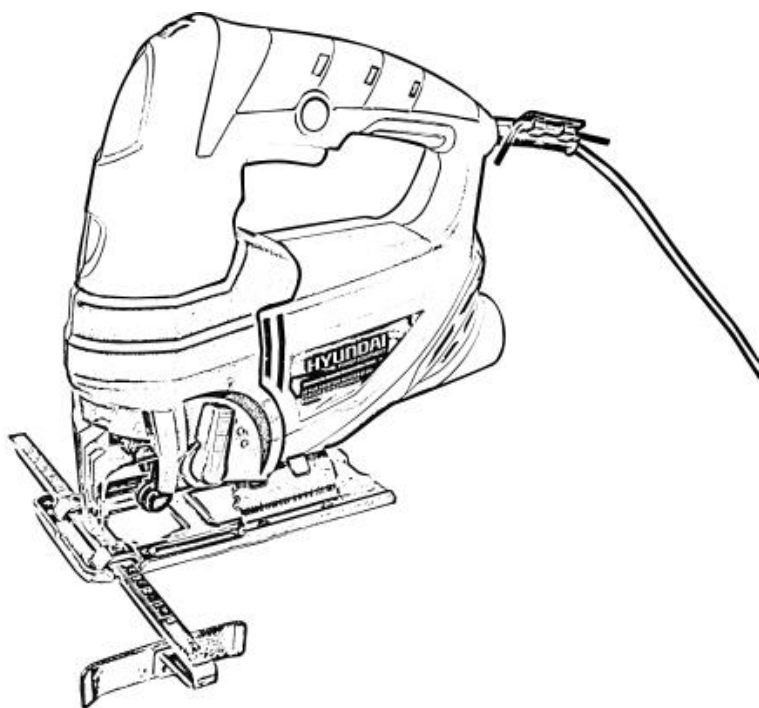


FEIDER

MACHINES







JIG SAW FSS710



ORIGINAL INSTRUCTIONS

SYMBOLS

The following symbols are used in this manual and/or on the machine:

	WARNING-To reduce the risk of injury, user must read instructions carefully
	In accordance with essential applicable safety standards of European directives
	Class II machine – Double insulation – You don't need any earthed plug.
	Wear eye protection.
	Denotes risk of personal injury, loss of life or damage to the tool in case of non-observance of the instructions in this manual
	Wear ear protection.

CONTENTS

- 1、 APPLICATION
- 2、 GENERAL POWER TOOL SAFETY WARNINGS
- 3、 SAFETY INSTRUCTIONS FOR PENDULUM JIG SAW
- 4、 COMPONENT LIST
- 5、 PACKAGE CONTENT LIST
- 6、 OPERATION INSTRUCTIONS
- 7、 TECHNICAL DATA
- 8、 NOISE
- 9、 ENVIRONMENT
- 10、 CLEANING AND MAINTENANCE
- 11、 WARRANTY

1、 APPLICATION

The jig saw is used for sawing wood, plastic or metal with the appropriate saw blade for each application. It is suitable for straight and curved surfaces with a mitre angle of up to 45°.

General Power Tool Safety Warnings



WARNING! Please read and understand this operating manual before use and keep it for your future reference. Your power tool should only be passed on together with these instructions.



WARNING! Read all safety warnings and all instructions. *Failure to follow the warnings and instructions may result in electric shock, fire and/or serious injury.*

Save all warnings and instructions for future reference. *The term "power tool" in the warnings refers to your mains-operated (corded) power tool or battery-operated (cordless) power tool.*

2、 GENERAL POWER TOOL SAFETY WARNINGS

2.1 WORK AREA SAFETY

- a) **Keep work area clean and well lit.** *Cluttered and dark areas invite accidents.*
- b) **Do not operate power tools in explosive atmospheres, such as in the presence of flammable liquids, gases or dust.** *Power tools create sparks which may ignite the dust or fumes.*
- c) **Keep children and bystanders away while operating a power tool.** *Distractions can cause you to lose control.*

2.2 ELECTRICAL SAFETY

- a) **Power tool plugs must match the outlet. Never modify the plug in any way.** *Do not use any adapter plugs with earthed (grounded) power tools. Unmodified plugs and matching outlets will reduce risk of electric shock.*
- b) **Avoid body contact with earthed or grounded surfaces such as pipes, radiators, ranges and refrigerators.** *There is an increased risk of electric shock if your body is earthed or grounded.*
- c) **Do not expose power tools to rain or wet conditions.** *Water entering a power tool will increase the risk of electric shock.*
- d) **Do not abuse the cord. Never use the cord for carrying, pulling or unplugging the power tool.** *Keep cord away from heat, oil, sharp edge or moving parts. Damaged or entangled cords increase the risk of electric shock.*
- e) **When operating a power tool outdoors, use an extension cord suitable for outdoor use.** *Use of a cord suitable for outdoor use reduces the risk of electric shock.*
- f) **If operating a power tool in a damp location is unavoidable, use a residual current device (RCD) protected supply.** *Use of an RCD reduces the risk of electric shock.*

2.3 PERSONAL SAFETY

- a) **Stay alert, watch what you are doing and use common sense when operating a power tool.** *Do not use a power tool while you are tired or under the influence of drugs, alcohol or medication. A moment of inattention while operating power tools may result in serious personal injury.*
- b) **Use personal protective equipment.** *Always wear eye protection. Protective equipment such as dust mask, non-skid safety shoes, hard hat, or hearing protection used for appropriate conditions will reduce personal injuries.*
- c) **Prevent unintentional starting. Ensure the switch is in the off-position before connecting to power source and /or battery pack, picking up or carrying the tool.** *Carrying power tools with your finger on the switch or energising power tools that have the switch on invites accidents.*
- d) **Remove any adjusting key or wrench before turning the power tool on.** *A wrench or a key left attached to a rotating part of the power tool may result in personal injury.*
- e) **Do not overreach. Keep proper footing and balance at all times.** *This enables better control of the power tool in unexpected situations.*
- f) **Dress properly. Do not wear loose clothing or jewellery.** *Keep your hair, clothing and gloves away from moving parts. Loose clothes, jewellery or long hair can be caught in moving parts.*
- g) **If devices are provided for the connection of dust extraction and collection facilities, ensure these are connected and properly used.** *Use of dust collection can reduce dust-related hazards.*

2.4 POWER TOOL USE AND CARE

- a) **Do not force the power tool. Use the correct power tool for your application.** *The correct power tool will do the job better and safer at the rate for which it was designed.*
- b) **Do not use the power tool if the switch does not turn it on and off.** *Any power tool that cannot be controlled with the switch is dangerous and must be repaired.*
- c) **Disconnect the plug from the power source and/or the battery pack from the power tool before making any adjustments, changing accessories, or storing power tools.** *Such preventive safety measures reduce the risk of starting the power tool accidentally.*
- d) **Store idle power tools out of the reach of children and do not allow persons unfamiliar with the power tool or these instructions to operate the power tool.** *Power tools are dangerous in the hands of untrained users.*
- e) **Maintain power tools. Check for misalignment or binding of moving parts, breakage of parts and any other condition that may affect the power tool's operation.** *If damaged, have the power tool repaired before use. Many accidents are caused by poorly maintained power tools.*
- f) **Keep cutting tools sharp and clean.** *Properly maintained cutting tools with sharp cutting edges are less likely to bind and are easier to control.*
- g) **Use the power tool, accessories and tool bits etc. in accordance with these instructions, taking into account the working conditions and the work to be performed.** *Use of the power tool for operations different from those intended could result in a hazardous situation.*

2.5 SERVICE

- a) **Have your power tool serviced by qualified repair person using only identical replacement parts.** *This will ensure that the safety of the power tool is maintained.*

Hold power tool by insulated gripping surfaces, when performing an operation where the cutting accessory may contact hidden wiring or its own cord. *Cutting accessory contacting a "live" wire may make exposed metal parts of the power tool "live" and could give the operator an electric shock.*

3、 SPECIAL SAFETY INSTRUCTIONS FOR PENDULUM JIG SAWS



Wear safety goggles and a dust mask for all dust-generating work.

- Keep children and other persons away from your working area.
- Before sawing wood, make sure there are no metal parts (nails, screws, etc.) in the cutting line. These must be removed otherwise.
- Use screw clamps or similar clamping tools for holding the work pieces in place. This provides a much more secure grip than is possible with your hands.
- Install an exhaust unit or a dust catching device.
- Make provisions to ensure that pieces which are cut off do not fly away uncontrollably, and that the saw blade cannot get stuck in the work piece.
- The saw should only be connected to single-phase alternating current, and only of the voltage indicated on the type plate. Since there is a double layer of insulation, it is also possible to connect to outlets without protective contact.
- Make sure the jig saw is switched off before connecting it to the mains.
- Do not use for cutting pipes.
- Do not use for cutting work pieces whose strength is greater than the maximum indicated cutting depth.
- Before sawing make sure that there is enough space under the work piece for the saw blade.
- Ensure that the saw blade is not touching the work piece before turning the saw on.
- Do not touch moving parts with your hands.
- Before sawing, make sure that the transparent protective cover is mounted on the saw and locked in the closed position.
- Do not remove chippings and shavings while the machine is running.
- Do not put the jig saw down until the saw blade has come to a complete stop.
- To avoid burns, do not touch the saw blade or the work piece with your hands immediately after operation.
- Be sure to disconnect the plug from the mains when inserting or changing the saw blades, or while performing any other maintenance work.
- Make sure the cable always leads away from the machine.
- Store the appliance out of reach of children, and do not let anyone use it without instruction.

4、 COMPONENT LIST



1. Cord
2. Lock-on button
3. On/Off switch
4. guard
5. Guide roller
6. Adjustable base
7. Oscillating motion adjustment knob
8. Dust extractor socket

5、 PACKAGE CONTENT LIST

- Remove all packing materials
- Remove remaining packaging and transit supports (if existing)
- Check the completeness of the packing content
- Check the appliance, the power cord, the power plug and all accessories for transportation damages.
- Keep the packaging materials as far as possible till the end of the warranty period. Dispose it into your local waste disposal system afterwards.



WARNING Packing materials are no toys! Children must not play with plastic bags!

Danger of suffocation!

- 1 Machine
- 2 Manual
- 1 Hex key
- 1 blade
- 1 pair carbon brushes



When parts are missing or damaged, please contact your dealer.

6、 OPERATING INSTRUCTIONS

6.1 Fitting the Inspector guard



A: Inspector guard
Important: wear safety goggles

6.2 Changing the saw blade



Releasing the saw blade.

Turn the screws anticlockwise

Insert the saw blade in the groove up to the stop and tighten the two screws of the retention clip.



Important! : Make sure the saw blade sits properly in the slot of the roller and groove.

6.3 Oscillation adjustment

The four levels of oscillating motion for the saw blade enable an optimal adjustment of the cutting speed, cutting power and cutting pattern to the material being worked on.

With every downward movement, the saw blade is raised from the work piece; this helps chip ejection, reduces frictional heat and lengthens the lifespan of the saw blade.

The smaller the oscillation level selected, the cleaner the cutting surface should be.

- Level 0 - no oscillating movement, for thin material
- Level I - slight oscillating movement, for thicker material
- Level II - medium oscillating movement, for hard material
- Level III - strong oscillating movement, for fast work

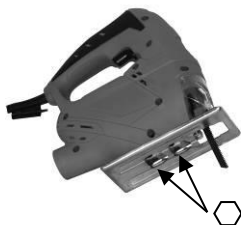
6.4 Switching ON/OFF)

Switching ON: Press the On/Off switch.

Continuous operation. Lock the On/Off switch with the Lock-on button.

Switching Off: Press the On/Off switch and release.

6.5 Adjusting the base



Undo the 2 screws to set the base to an angle up to 45° on the right or left side.

6.6 Sawing tips

Cutting veneered chipboard:

Use a fine saw blade

Position the base on the uncovered area

Advance the saw with little force.

Cutting holes: Possible only in chipboard and wood unless you drill a hole first. Press the jig saw firmly against the support and move slowly in cutting direction.

6.7 Dust extraction

The jigsaw is equipped with a dust extractor socket. You can connect your vacuum cleaner to the socket at the rear of the jigsaw. If you require a special adapter, please contact the manufacturer of your vacuum cleaner.

7、 TECHNICAL DATA

Nominal voltage	230-240 V a.c	50 Hz
Power consumption	710W	
No-load speed	0-3000/min	

8、 NOISE

Noise emission values measured according to relevant standard.

Acoustic pressure level L_{pA} 91.5 dB(A) $K=3dB(A)$
Acoustic power level L_{wA} 102.5dB(A) $K=3dB(A)$

ATTENTION! Wear hearing protection when sound pressure is greater than 85 dB(A).



Acoustic emission value
Working board $a_{h,B}=9.519m\ m/s^2$ $K = 1.5\ m/s^2$
Working sheet metal $a_{h,M} = 8.293\ m/s^2$ $K = 1.5\ m/s^2$

9、 ENVIRONMENT

- Should your machine need replacement after extended use, do not put it in the domestic waste but dispose of it in an environmentally safe way.
- Waste electrical products should not be disposed of with household waste. Please recycle where facilities exist. Check with your Local Authority or retailer for recycling advice

CAUTION! This product has been marked with a symbol relating to removing electric and electronic waste. This means that this product shall not be discarded with household waste but that it shall be returned to a collection system which conforms to the European WEEE Directive. Contact your local authorities or stocks for advice on recycling. It will then be recycled or dismantled in order to reduce the impact on the environment. Electric and electronic equipment can be hazardous for the environment and for human health since they contain hazardous substances.

10、 CLEANING AND MAINTENANCE

- This tool does not require any special maintenance. Regularly clean the ventilation slots and the dirty with dry cloth. Do not get liquid inside the tool. Do not use household chemicals to clean the tool e.g. turpentine, paint thinners.
- If the carbon brushes need to be replaced, have this done by a qualified repair person (always replace the two brushes at the same time).
- if the replacement of the supply cord is necessary, it must be replaced by the manufacturer, its service agent or similarly qualified persons in order to avoid a hazard

11、 WARRANTY

1. The products are designed to highest DIY quality standards. We offer a 24-month warranty for its products, from the date of purchase. This warranty applies to all material and manufacturing defects which may arise. Further claims of any nature, whether direct or indirect, with regard to persons and/or materials, are not possible.

2. In the event of a problem or defect, you should first always consult your dealer. In most cases, the dealer will be able to solve the problem or correct the defect.

3. Repairs or the replacement of parts will not extend the original warranty period.

4. Defects which have arisen as a result of improper use or wear are not covered by the warranty.

Amongst other things, this relates to switches, protective circuit switches and motors, in the event of wear.

5. Your claim upon the warranty can only be processed if:

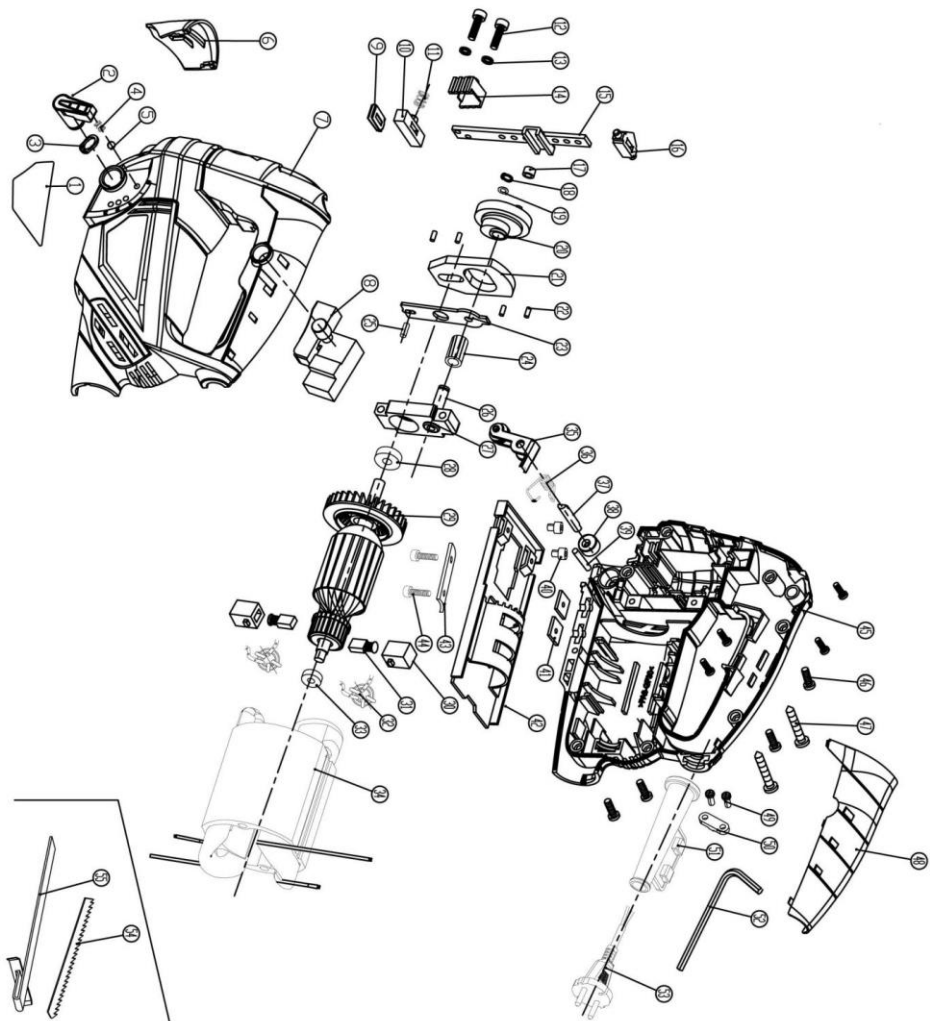
- Proof of the purchase date can be provided in the form of a receipt
- No repairs and/or replacements have been carried out by third parties
- The appliance has not been subjected to improper use (overloading of the machine or fitting non-approved accessories).
- There is no damage caused by external influences or foreign bodies such as sand or stones.
- There is no damage caused by non-observance of the safety instructions and the instructions for use.

6. The warranty stipulations apply in combination with our terms of sale and delivery.

7. Faulty tools to be returned to via your dealer will be collected by as long as the product is properly packaged. If faulty goods are sent directly to by the consumer, we will only be able to process these goods if the consumer pays the shipping costs.

8. Products which are delivered in a poorly packaged condition will not be accepted.

EXPLODED VIEW



DECLARATION OF CONFORMITY

BUILDER SAS

32, rue Aristide Bergès -ZI du casque, 31270 Cugnaux - France
Tel. +33 (0) 5.34.502.502 Fax: +33 (0) 5.34.502.503

Declares that the machine named below

JIG SAW
FSS710

Serial number:

Complies with the following European Directives:

Machinery Directive 2006/42/EC
EMC Directive 2014/30/EU
RoHS directive 2011/65/EU

Applicable harmonized standards:
EN66014-1:2006+A1:2009+A2:2011
EN55014-2:2015
EN61000-3-2:2014
EN61000-3-3:2013
EN60745-1:2009+A11:2010
EN60745-2-11:2010

Cugnaux, 31/10/2018
Philippe MARIE / CEO



Responsible of technical file: M. Olivier Patriarca