

ORIGINAL INSTRUCTIONS

**FEIDER**  
MACHINES

**CORDLESS GRASS TRIMMER**

**FCBN20V**

**INSTRUCTIONS MANUAL**



**WARNING: READ THE FOLLOWING INSTRUCTIONS BEFORE USE THIS MACHINE**

**BUILDER SAS**  
32, rue Aristide Bergès - ZI 31270 Cugnaux – France  
MADE IN PRC 2020



# 1.SAFETY WARNINGS

---

**⚠ WARNING** Read all safety warnings and all instructions. *Failure to follow the warnings and instructions may result in electric shock, fire and/or serious injury.*

**Save all warnings and instructions for future reference.** *The term "power tool" in the warnings refers to your mains-operated (corded) power tool or battery-operated (cordless) power tool.*

## 1) Work area safety

a) **Keep work area clean and well lit.** *Cluttered or dark areas invite accidents.*

b) **Do not operate power tools in explosive atmospheres, such as in the presence of flammable liquids, gases or dust.** *Power tools create sparks which may ignite the dust or fumes.*

c) **Keep children and bystanders away while operating a power tool.** *Distractions can cause you to lose control.*

## 2) Electrical safety

a) **Power tool plugs must match the outlet. Never modify the plug in any way. Do not use any adapter plugs with earthed (grounded) power tools.** *Unmodified plugs and matching outlets will*

*reduce risk of electric shock.*

**b) Avoid body contact with earthed or grounded surfaces, such as pipes, radiators, ranges and refrigerators.** *There is an increased risk of electric shock if your body is earthed or grounded.*

**c) Do not expose power tools to rain or wet conditions.** *Water entering a power tool will increase the risk of electric shock.*

**d) Do not abuse the cord. Never use the cord for carrying, pulling or unplugging the power tool. Keep cord away from heat, oil, sharp edges or moving parts.** *Damaged or entangled cords increase the risk of electric shock.*

**e) When operating a power tool outdoors, use an extension cord suitable for outdoor use.** *Use of a cord suitable for outdoor use reduces the risk of electric shock.*

**f) If operating a power tool in a damp location is unavoidable, use a residual current device (RCD) protected supply.** *Use of an RCD reduces the risk of electric shock.*

### **3) Personal safety**

**a) Stay alert, watch what you are doing and use common sense when operating**

**a power tool. Do not use a power tool while you are tired or under the influence of drugs, alcohol or medication. A moment of inattention while operating power tools may result in serious personal injury.**

**b) Use personal protective equipment. Always wear eye protection. Protective equipment such as dust mask, non-skid safety shoes, hard hat, or hearing protection used for appropriate conditions will reduce personal injuries.**

**c) Prevent unintentional starting. Ensure the switch is in the off-position connecting to power source and/or battery pack, picking up or carrying the tool. Carrying power tools with your finger on the switch or energizing power tools that have the switch on invites accidents.**

**d) Remove any adjusting key or wrench before turning the power tool on. A wrench or a key left attached to a rotating part of the power tool may result in personal injury.**

**e) Do not overreach. Keep proper footing and balance at all times. This enables better control of the power tool in unexpected situations.**

**f) Dress properly. Do not wear loose**

**clothing or jewelry. Keep your hair, clothing and gloves away from moving parts. *Loose clothes, jewelry or long hair can be caught in moving parts.***

**g) If devices are provided for the connection of dust extraction and collection facilities, ensure these are connected and properly used. *Use of dust collection can reduce dust-related hazards.***

#### **4) Power tool use and care**

**a) Do not force the power tool. Use the correct power tool for your application. *The correct power tool will do the job better and safer at the rate for which it was designed.***

**b) Do not use the power tool if the switch does not turn it on and off. *Any power tool that cannot be controlled with the switch is dangerous and must be repaired.***

**c) Disconnect the plug from the power source and/or the battery pack from the power tool before making any adjustments, changing accessories, or storing power tools. *Such preventive safety measures reduce the risk of starting the power tool accidentally.***

**d) Store idle power tools out of the reach of children and do not allow persons**

**unfamiliar with the power tool or these instructions to operate the power tool.** *Power tools are dangerous in the hands of untrained users.*

**e) Maintain power tools.** Check for misalignment or binding of moving parts, breakage of parts and any other condition that may affect the power tool's operation. If damaged, have the power tool repaired before use. *Many accidents are caused by poorly maintained power tools.*

**f) Keep cutting tools sharp and clean.** *Properly maintained cutting tools with sharp cutting edges are less likely to bind and are easier to control.*

**g) Use the power tool, accessories and tool bits etc. in accordance with these instructions, taking into account the working conditions and the work to be performed.** *Use of the power tool for operations different from those intended could result in a hazardous situation.*

#### **5) Battery tool use and care**

**a) Recharge only with the charger specified by the manufacturer.** *A charger that is suitable for one type of battery pack*

*may create a risk of fire when used with another battery pack.*

**b) Use power tools only with specifically designated battery packs.** *Use of any other battery packs may create a risk of injury and fire.*

**c) When battery pack is not in use, keep it away from other metal objects, like paper clips, coins, keys, nails, screws or other small metal objects, that can make a connection from one terminal to another.** *Shorting the battery terminals together may cause burns or a fire.*

**d) Under abusive conditions, liquid may be ejected from the battery; avoid contact. If contact accidentally occurs, flush with water. If liquid contacts eyes, additionally seek medical help.** *Liquid ejected from the battery may cause irritation or burns.*

## **6) Service**

**a) Have your power tool serviced by a qualified repair person using only identical replacement parts.** *This will ensure that the safety of the power tool is maintained*

## **ADDITIONAL SAFETY RULES FOR GRASS TRIMMER**

- Keep in mind that the operator or user is responsible for accidents or hazards occurring to other people or their property.
- Danger! The cutting elements continue to rotate after the motor is switched off
- Before use check the tool and battery about signs of damage or ageing. If there are damages or ageing, do not use the tool and bring it to a qualified service for inspections and reparations.
- Read the instruction carefully. Be familiar with the controls and proper use of the equipment.
- Local regulation may restrict the age of the operator.
- Always wear substantial footwear and long trousers while operating the machine
- Wear ear, eye and dust protection at all times. Wear also helmet, gloves and protection clothes.
- Warning - never allow children, persons with reduced physical, sensory or mental capabilities or lack of experience and knowledge or people unfamiliar with these instructions to use the machine.



- Avoid using the trimmer while people, especially children, infirm people or pets, are nearby.
- Use the trimmer only in daylight or good artificial light.
- Never operate the trimmer with damaged guards or shields or without guards or shields in place.
- Switch on the motor only when the hands and feet are away from the cutting means.
- Never fit metal cutting elements.
- Use only the manufacturer's recommended placement parts and accessories.
- Switch off and remove the battery when leaving the trimmer unattended.
- Switch off and remove the battery before carrying out maintenance or cleaning work.
- Inspect and maintain the trimmer regularly. Have the trimmer repaired only by an authorised repairer.
- Take care against injury from the cutting lines. After extending new cutter line or replacing the spool line. Always return the trimmer to its normal operating position before switching on.
- When not in use, store the trimmer out of the reach of children and infirm people.

- Periodically inspect the condition of the cutting head. If the spool is damaged, switch off; replace the spool by a new one.
- Do not use the machine to cut grass, which is not on the ground. For example, do not cut grass, which is on walls or rocks.
- Do not switch on the machine in enclosed or poorly ventilated spaces or in the presence of inflammable and /or explosive substances such as liquid, gases and powders.
- Always stop the trimmer and remove the battery when cutting is delayed or when walking from one cutting location to another.
- Do not cross roads or gravel paths with machine still running.
- Only use the machine according to the instructions given in this manual.
- Do not extend the trimming line beyond the guard and do not operate the trimmer without both lines extended and proper line installed.
- Check regularly that the nuts, bolts and screws are tight.
- Switch off the tool and remove the battery when:

- whenever the machine is left by the user;
- before clearing a blockage;
- before checking, cleaning or working on the machine;
- after striking a foreign object to inspect the machine for damage
- if the machine starts to vibrate abnormally, for immediately check;
- Never to replace the non-metallic cutting means with metallic cutting means.
- Do not overreach and to keep the balance at all times.
- Always be sure of the footing on slopes.
- Walk, never run.
- Warning! Do not touch moving hazardous parts before the machine is disconnected from the mains. The moving hazardous parts have come to a complete stop;
- Avoid using the machine in bad weather conditions especially when there is a risk of lightning;
- In case of abnormal vibration, immediately stop to use the machine. When the machine is in a complete stop, inspect the tool and bring to our service agent if necessary.

- Take care against injury to feet and hands from the cutting means.
- Always ensure that the ventilation openings are kept clear of debris
- Disconnect the machine from the power supply (i.e. remove the plug from the mains, remove the disabling device or removable battery) before carrying out maintenance or cleaning work.
- Use only the manufacturer's recommended replacement parts and accessories.
- Inspect and maintain the machine regularly. Have the machine repaired only by an authorized repairer.
- When not in use, store the machine out of the reach of children.

### **Intended Use**

This tool is designed to cut the grass, as well as the edges of the flowerbeds. Do not use it for other activities. Any use of this product for any purpose other than that described in this manual may cause damage to the unit or result in serious injury to the user. Specially design to work with Hyundai range of battery and charger.

## **Residual risks**

- Cuts from the blade
- Inhalation of particles of material to be cut
- Projection of the parts of the cutting blades
- Contact with uncovered cutting head (wounds, cuts)
- Contact with tool in operation (injuries, cuts)
- Development of toxic dusts / fumes when used in confined spaces (vomiting / nausea)
- Hearing loss in the absence of proper hearing protection

**WARNING!** This machine generates an electromagnetic field during its operation. This field may under certain circumstances disrupt the functioning of active or passive medical implants. To reduce the risk of serious injury or death, people with medical implants should consult with their physician and the implant manufacturer before using this machine.

### **Symbols**



Warning symbol



Read the instructions manual



Wear an ocular protection



Wear a hearing protection



Do not expose to rain or humidity



Risk of projections. Keep bystanders away



Remove the battery when the tool is damaged and before maintenance and servicing. Read the instruction manual



Guarantee sound power level



Do not use metal blades

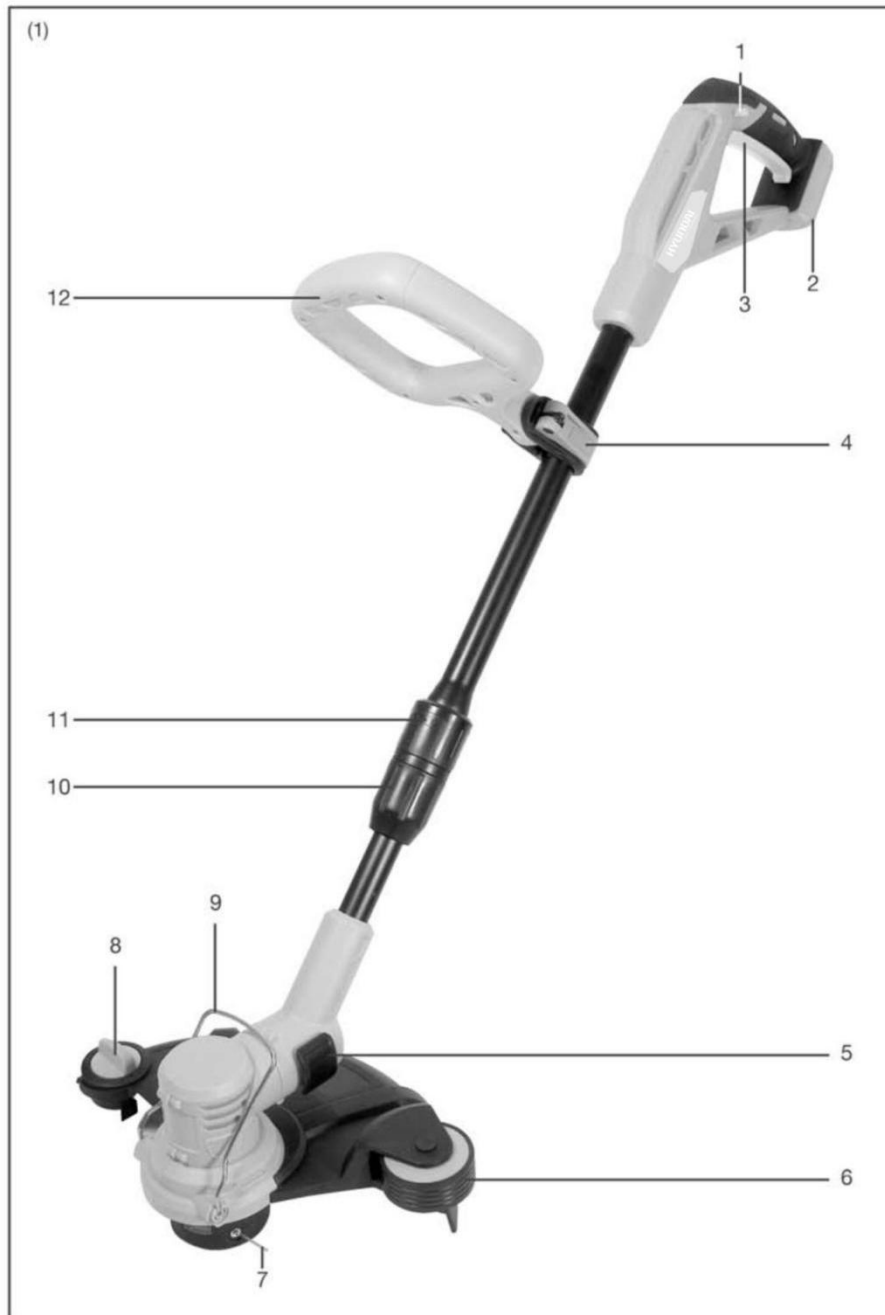


Wear protection gloves

## 2. YOUR PRODUCT

---

### a. Description



- |                                   |                                       |
|-----------------------------------|---------------------------------------|
| 1. ON/OFF trigger lock-out button | 7. Single line cutting spool          |
| 2. Battery port                   | 8. Line cutting blade adjustment dial |
| 3. ON/OFF trigger                 | 9. Guide                              |
| 4. Assist handle locking lever    | 10. Shaft length adjuster lock        |
| 5. Edger adjustment button        | 11. Shaft angle adjuster lock         |
| 6. Edging guide wheel             | 12. Auxiliary assist handle           |

b. **Technical data**

<b>Voltage</b>	20V d.c.
<b>No load speed</b>	7200/min
<b>Cutting width</b>	250/300 mm
<b>Mass</b>	2,74 kg
<b>Sound Pressure level LpA</b>	85 dB(A) K=3dB(A)
<b>Measured sound power level</b>	89 dB(A) K=3dB(A)
<b>Guarantee sound Power level LwA</b>	96dB(A)
<b>Vibration Level</b>	2.5 m/s <sup>2</sup> K=1.5m/s <sup>2</sup>

**Information**

- The declared vibration total value has been measured in accordance with a standard test method and may be used for comparing one tool with another;
- The declared vibration total value may also be used in a preliminary assessment of exposure.

**Warning**

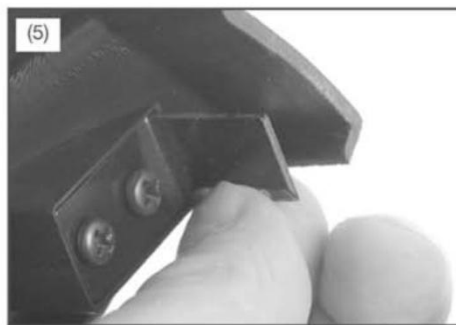
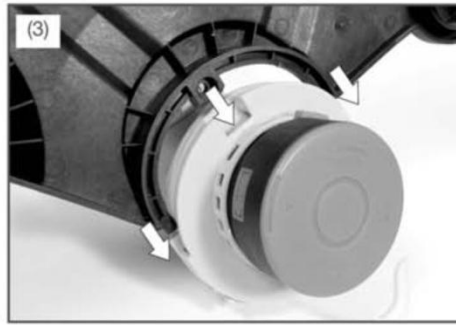
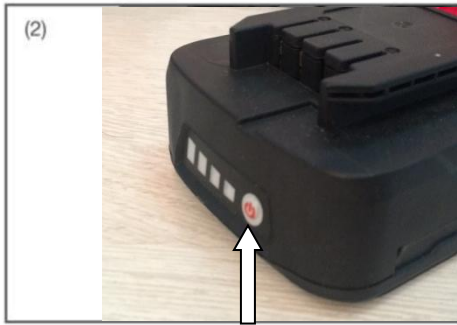
- That the vibration emission during actual use of the power tool can differ from the declared total value depending on the ways in which the tool is used;
- the need to identify safety measures to protect the operator that are based on an estimation of exposure in the actual conditions of use (taking account of all parts of the operating cycle such as the times when the tool is switched off and when it is running idle in addition to the trigger time).

**Wear hearing protection.**

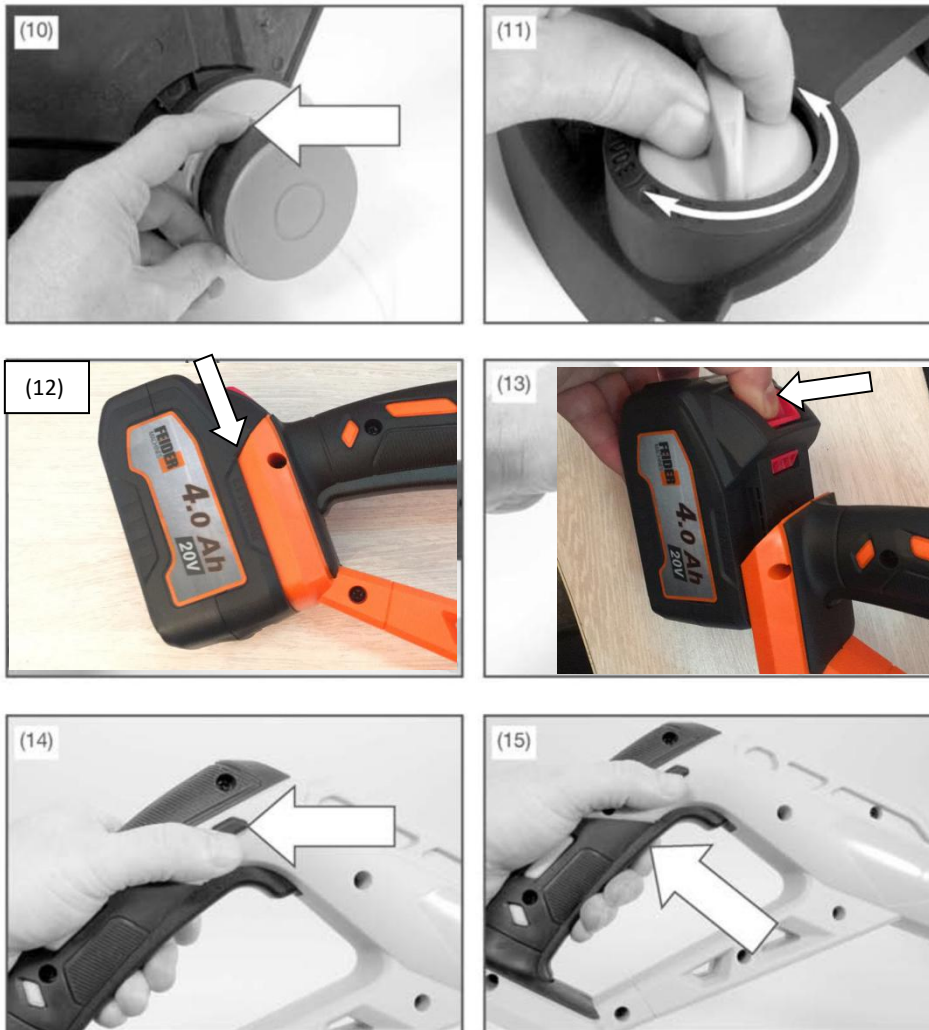


### 3. ASSEMBLY

---



**NOTE: Supplied without battery or charger**



**a. Charging (Charger and battery not included in this model)**

1) Take the battery pack out of the equipment. Do this by pressing the push lock button.

2) Check that your mains voltage is the same as that marked on the rating plate of the battery charger. Insert the power plug of the charger into the socket outlet. The RED LED will then begin to light.

3) Insert the battery pack into the battery charger .then the red LED on charger will begin to Green flash light.

4) You will find a label with “Charger indicator” of the LED indicator on the charger.

The battery pack can become a little warm during the charging. This is normal.

If the battery pack fails to charge, check:

- Voltage at the power socket
- Whether there is good contact at the charging contacts.
- Whether the battery pack is warm or not. The battery protection system will not allow the battery to be charged if the battery temperature is over 40°C after use. Allow the battery pack to cool to room temperature before commencing with the charging.

If the battery pack still fails to charge, send the charging unit and the battery pack to our customer service center.

To ensure that the battery pack provides long service, you should take care to recharge it promptly. You must recharge the battery pack when you notice that the power drops. Never allow the battery pack to become fully discharged. This will cause it to develop a defect.

#### Battery capacity indicator

Press the switch for the battery capacity indicator . The battery capacity indicator shows the charge status of the battery using 4 LEDs as following:

All 4 LEDs are lit:

The battery is fully charged.

3 LED(s) are lit:

The battery has approx. 75% remaining charge.





2 LED(s) are lit:

The battery has approx. 50% remaining charge.

1 LED is lit:

The battery will be empty soon, please recharge the battery.

#### Charger indicator

Indicator status	Explanations and actions
	<p>Ready for use</p> <p>The charger is connected to the mains and is ready for use; there is no battery pack in the charger.</p>
	<p>Charging</p> <p>The charger is charging the battery pack in charge mode.</p>
	<p>Battery pack is full of charge.</p> <p>Charging is finished and battery pack in the charger.</p>
	<p>The temperature of battery is too high or too low, the charger is under protection status. The charging function can be recovered after the temperature is normal.</p>



Unrecoverable battery malfunction.

**b. ATTACHING THE GUARD**

Remove the battery pack. Invert the grass trimmer/edger to access the trimmer head. Remove the pre-installed screw from the trimmer head.

Place the guard on to the trimmer head so that the large part of the guard sits to the rear, Fig.3.

Align the screw hole on the guard with the screw hole on the trimmer head. Insert the screw into the trimmer head, fastening the guard in place. Fig.4.

Remove the protective tape from the line cutting blade, Fig.5.

**c. ADJUSTING THE AUXILIARY HANDLE**

To avoid injury, adjust the auxiliary handle for optimum control and balance. Do not overreach when operating grass trimmer/edger. Keep proper balance at all times for better control of the tool in unexpected situations.

The auxiliary handle can be moved either up and down the shaft, forward and backwards or rotated 360° around the shaft. To find your optimum desired position unlock the assist handle locking lever by pulling outwards, Fig.6. Once you have the desired position relock the assist handle locking lever by pushing inwards.

**d. ADJUSTING THE SHAFT LENGTH**

Loosen the lower part of the centre collar (Fig.7). This will allow the lower part of the shaft to be extended or retracted. When the shaft is at a comfortable length, retighten the collar.

**e. ROTATING THE SHAFT**

The shaft can be rotated to the 0° or 180° position for trimming and edging operations.

Pull the upper part of the centre collar (Fig.8). This will allow the motor to be rotated between the 0° and 180° position.

Note: The head will only lock in the 0 or 180° position.

**f. ROTATING THE TRIMMER HEAD**

The trimmer head can be rotated to the 0° or 90° position for trimming and edging operations.

Press the Edger adjustment button, Fig.9, and the trimmer head will spring around 90°. Make sure it is locked into place. To move the trimmer head back simply press the Edger adjustment button again and rotate back to its original position.

**g. EXTENDING THE LINE**

To extend the line press the spool line extension button on the spool, Fig.10.

Warning! To prevent accidental starting that could cause serious personal injury, always remove the battery pack from the product when extending the line.

**h. ADJUSTING THE LINE CUTTING BLADE**

The cutting line can be set at two lengths (250 & 300 mm). To adjust the line cutting blade turn the Line cutting blade adjustment dial by pushing down and rotating 180°, Fig.11.

**i. INSTALLING THE BATTERY PACK**

Warning! Always remove battery pack from your tool when you are assembling parts, making adjustments, cleaning, carrying, transporting or when not in use. Removing battery pack will prevent accidental starting that could cause serious personal injury.

NOTE: To avoid serious personal injury, always remove the battery pack and keep hands clear of the lock-out button when carrying or transporting the tool.

Slide the battery pack into the tool base, Fig 12. (Note the battery has raised ribs which allows it to fit into the tool only one way). Make sure the battery pack snaps into place and that battery pack is secured in the tool before beginning operation. Improper installation of the battery pack can cause damage to internal components.

**j. REMOVING THE BATTERY PACK**

Locate the battery release catch on the top of the battery and press downwards, Fig 13. Whilst holding down the battery release catch slide the battery pack away from the tool

## **4. OPERATION**

---

**To avoid injury:**

**Do not squeeze the trigger while the grass trimmer/edger is inverted.**

**Do not carry the grass trimmer/edger with your finger on the switch. Avoid unintentional starting.**

**a. TURNING ON AND OFF**

Press and hold the On/Off trigger lock-out button, Fig.14.

Depress the On/Off trigger, Fig.15.

Caution: Always allow 5 seconds or more for the cutting line spool to stop rotating after releasing the trigger switch. Do not invert the grass trimmer/edger, or place your hands under the protective guard until the grass trimmer/edger spool has come to a complete stop.

**b. PREPARING TO WORK**

Ensure that the battery is not inserted in its compartment.

Before starting work please:

Check that the trigger switches and the safety switch should move freely without forcing and return automatically and rapidly back to their neutral position;

Check that the cooling air vents are not obstructed;

Check that hand grips and protection devices are clean and dry, correctly mounted and well fastened to the tool;

Check that the tool is not showing signs of wear or damage due to knocks or other causes, and carry out the necessary repairs.

Check that the battery is in good working condition and there are no signs of damage.

Never use the tool with a damaged or worn battery;

Charge the battery according to the instructions in the charging section.

**c. TRIMMING AND EDGING**

For the most effective grass trimming, ensure the tool is operating at full speed and then use slow shallow sweeps of the line, ensuring that you do not overload the tool by cutting too fast or cutting through heavy terrain.

Make sure that the work area is free of rock, debris, lines and other foreign objects.

Start the tool before approaching the grass to be cut.

Cut the grass by swinging the tool from right to left and proceed slowly keeping the trimmer inclined forwards at an angle of about 30°. Light cuts are better than heavy cuts as they allow the cut grass to fall away from the spool preventing the grass from clogging the spool.

High grass should be cut in layers always beginning from the top. Do not cut damp or wet grass. Do not overload your tool.

Avoid wearing the line out quickly by knocking against hard objects (stones, walls, fences etc.).

Watch out for kickback in the events of impact with hard objects.

After finishing the cutting operation, keep the head close to ground level, release the trigger switch and allow the motor to come to a complete stand still. Place the trimmer on the ground, remove the battery.

For edging, rotate the motor head.

Note. Periodically clean out the grass between the spool and the rim of the guard to prevent the tool from vibrating.

## **5. MAINTENANCE AND STORAGE**

---

Warning! To prevent accidental starting that could cause serious personal injury; always remove the battery pack from the product before adjusting, inspecting, or cleaning.

Never disassemble the tool or carry out any repairs. Always have the trimmer and charger maintained or repaired by a competent person at an authorised service centre.

Warning – there is a danger of moving hazardous parts.

### **a. CLEANING**

Remove the battery pack. Brush or blow dust and debris out of the air vent using compressed air or a vacuum. Keep the air vents free of obstructions, sawdust, and wood chips. Do not sprays, wash, or immerse the air vents in water.

Wipe off the housing and the plastic components using a moist, soft cloth. Do not use strong solvents or detergents on the plastic housing or plastic components. Certain household cleaners may cause damage, and may cause a shock hazard.

### **b. STORAGE**

Clean the grass trimmer thoroughly before storing. Store the grass trimmer in a dry, well-ventilated place that is inaccessible to children. Keep away from corrosive agents such as garden chemicals and dicing salts.

Always place blade cover on cutting blades before storing.

Store and charge your batteries in a cool area. Temperatures above or below normal room temperature will shorten battery pack life.

Never store batteries in a discharged condition. Wait for battery pack to cool and fully charge immediately.

All batteries gradually lose their charge. The higher the temperature, the quicker they lose their charge. If you store your unit for long periods of time without using it, recharge the batteries every month or two. This practice will prolong battery pack life.

## 6. DISPOSAL

---



Electrical products should not be discarded with household products. According to the European Directive 2012/19/EU on waste electrical and electronic equipment and its implementation into national law, electrical products used must be collected separately and disposed of at collection points provided for this purpose. Talk with your local authorities or dealer for advice on recycling.

## 7. Warranty

---

We guarantee this product for 2 full years.

The warranty period for this item starts on the day of purchase. You can prove the date of purchase by sending us the original receipt.

We insure over the entire warranty period:

- Free repair of possible malfunctions.
- Free replacement of damaged parts.
- Including the free service of our specialized personnel (i.e. free assembly by our technicians)

Provided that the damage is not due to improper use of the device.

To help you with your product, we invite you to use this link or call us on +33 (0)9 70 75 30 30:

<https://services.swap-europe.com/contact>

You must create a "ticket" via their platform:

- Register or create your account
- Indicate the reference of the tool
- Choose the subject of your request
- Explain your problem
- Attach these files: Invoice or receipt, identification plate photo (serial number), photo of the part you need (eg broken transformer plug pins)



## 8. DECLARATION OF CONFORMITY

---



EC Declaration of conformity

**BUILDER SAS**  
32, rue Aristide Bergès - ZI 31270 Cugnaux – France

Declares that the machine

**Designation: CORDLESS GRASS TRIMMER  
FCBN20V**

**Serial number: 20200812345-20200812644**

**Is in conformity with the European Directives:**

Machine Directive 2006/42/EC

EMC Directive 2014/30/EU

RoHS Directive 2011/65/EU+2015/863/EU

Noise directive 2000/14/EC + Annex VI & 2005/88/EC

<b>Measured sound power level</b>	89 dB(A) K=3dB(A)
<b>Guarantee sound Power level LwA</b>	96dB(A)

**This product is also in conformity with the following standards:**

EN 60335-1:2012+A11:2014

EN50636-2-91:2014

EN55014-1:2017

EN55014-2:2015

Notified body 0359

Intertek Testing & Certification Ltd.

Davy Avenue, Knowlhill, Milton Keynes, MK5 8NL

Telephone: +44 (0)1908 857777 Fax: +44 (0)1908 857830

Web: [www.intertek.com](http://www.intertek.com)

Responsible of the technical file: Mr Olivier Patriarca

Cugnaux, 12/06/2020

Philippe MARIE / PDG