

Instruction manual

750W Impact Drill

CID750W (DY94279)



ORIGINAL INSTRUCTIONS





Congratulation on your purchase.

The quality team at CARREFOUR cares for its products to meet conformity and performances.

Paying close attention to your satisfaction, our experts work all day on the improvement of our products.



For assembly and/or maintenance and/or use of your product, you can use:



These products are available in CARREFOUR stores.



Read this manual carefully

For a better use of your new device, we recommend you to read carefully this Instruction Manual and keep it for record.

Keep it carefully for future reference.





Please also find information about the scraping of the product in this Instruction Manual.



Safety instructions

Before installing or using this product, please read carefully the safety measures after the table of contents.

Pictograms used

	Warning symbols with information on damage and injury prevention.
	Read the instruction manual.
	Electrical products must not be disposed of with the domestic waste.
	Protection class II (double insulation)

CONTENTS

SAFETY INSTRUCTIONS	4
PRODUCT DESCRIPTION.....	7
INTENDED USE.....	9
SCOPE OF DELIVERY.....	9
BEFORE USE.....	9
OPERATION	10
CLEANING & MAINTENANCE	10
STORAGE AND TRANSPORTATION	11
REPLACEMENT PARTS /ACCESSORIES	11
DISPOSAL.....	11
DECLARATION OF CONFORMITY	12
WARRANTY	13
PRODUCT FAILURE.....	14
WARRANTY EXCLUSIONS	15

SAFETY INSTRUCTIONS

GENERAL POWER TOOL SAFETY WARNINGS

WARNING Read all safety warnings, instructions, illustrations and specifications provided with this power tool. *Failure to follow all instructions listed below may result in electric shock, fire and/or serious injury.*

Save all warnings and instructions for future reference.

The term "power tool" in the warnings refers to your mains-operated (corded) power tool or battery-operated(cordless) power tool.

1. Work area safety

- a) **Keep work area clean and well lit.** *Cluttered or dark areas invite accidents.*
- b) **Do not operate power tools in explosive atmospheres, such as in the presence of flammable liquids, gases or dust.** *Power tools create sparks which may ignite the dust or fumes.*
- c) **Keep children and bystanders away while operating a power tool.** *Distractions can cause you to lose control.*

2. Electrical safety

- a) **Power tool plugs must match the outlet. Never modify the plug in any way. Do not use any adapter plugs with earthed (grounded) power tools.** *Unmodified plugs and matching outlets will reduce risk of electric shock.*
- b) **Avoid body contact with earthed or grounded surfaces, such as pipes, radiators, ranges and refrigerators.** *There is an increased risk of electric shock if your body is earthed or grounded.*
- c) **Do not expose power tools to rain or wet conditions.** *Water entering a power tool will increase the risk of electric shock.*
- d) **Do not abuse the cord. Never use the cord for carrying, pulling or unplugging the power tool. Keep cord away from heat, oil, sharp edges or moving parts.** *Damaged or entangled cords increase the risk of electric shock.*
- e) **When operating a power tool outdoors, use an extension cord suitable for outdoor use.** *Use of a cord suitable for outdoor use reduces the risk of electric shock.*
- f) **If operating a power tool in a damp location is unavoidable, use a residual current device (RCD) protected supply.** *Use of an RCD reduces the risk of electric shock.*

3. Personal safety

- a) **Stay alert, watch what you are doing and use common sense when operating a power tool. Do not use a power tool while you are tired or under the influence of drugs, alcohol or medication.** *A moment of inattention while operating power tools may result in serious personal injury.*
- b) **Use personal protective equipment. Always wear eye protection.** *Protective equipment such as a dust mask, non-skid safety shoes, hard hat or hearing protection used for appropriate conditions will reduce personal injuries.*
- c) **Prevent unintentional starting. Ensure the switch is in the off-position before connecting to power source and/or battery pack, picking up or carrying the tool.** *Carrying power tools with your finger on the switch or energising power tools that have the switch on invites accidents.*
- d) **Remove any adjusting key or wrench before turning the power tool on.** *A wrench or a key left attached to a rotating part of the power tool may result in personal injury.*
- e) **Do not overreach. Keep proper footing and balance at all times.** *This enables better control of the*

power tool in unexpected situations.

f) Dress properly. Do not wear loose clothing or jewellery. Keep your hair and clothing away from moving parts. *Loose clothes, jewellery or long hair can be caught in moving parts.*

g) If devices are provided for the connection of dust extraction and collection facilities, ensure these are connected and properly used. *Use of dust collection can reduce dust-related hazards.*

h) Do not let familiarity gained from frequent use of tools allow you to become complacent and ignore tool safety principles. *A careless action can cause severe injury within a fraction of a second.*

4. Power tool use and care

a) Do not force the power tool. Use the correct power tool for your application. *The correct power tool will do the job better and safer at the rate for which it was designed.*

b) Do not use the power tool if the switch does not turn it on and off. *Any power tool that cannot be controlled with the switch is dangerous and must be repaired.*

c) Disconnect the plug from the power source and/or remove the battery pack, if detachable, from the power tool before making any adjustments, changing accessories, or storing power tools. *Such preventive safety measures reduce the risk of starting the power tool accidentally.*

d) Store idle power tools out of the reach of children and do not allow persons unfamiliar with the power tool or these instructions to operate the power tool. *Power tools are dangerous in the hands of untrained users.*

e) Maintain power tools and accessories. Check for misalignment or binding of moving parts, breakage of parts and any other condition that may affect the power tool's operation. If damaged, have the power tool repaired before use. *Many accidents are caused by poorly maintained power tools.*

f) Keep cutting tools sharp and clean. *Properly maintained cutting tools with sharp cutting edges are less likely to bind and are easier to control.*

g) Use the power tool, accessories and tool bits etc. in accordance with these instructions, taking into account the working conditions and the work to be performed. *Use of the power tool for operations different from those intended could result in a hazardous situation.*

h) Keep handles and grasping surfaces dry, clean and free from oil and grease. *Slippery handles and grasping surfaces do not allow for safe handling and control of the tool in unexpected situations.*

5. Service

a) Have your power tool serviced by a qualified repair person using only identical replacement parts.

This will ensure that the safety of the power tool is maintained.

SPECIFIC DRILL SAFETY WARNINGS-SAFETY INSTRUCTIONS FOR ALL OPERATIONS

a) Wear ear protectors when impact drilling. *Exposure to noise can cause hearing loss.*

b) Use the auxiliary handle(s). *Loss of control can cause personal injury.*

c) Brace the tool properly before use. *This tool produces a high output torque and without properly bracing the tool during operation, loss of control may occur resulting in personal injury.*

d) Hold the power tool by insulated gripping surfaces, when performing an operation where the cutting accessory may contact hidden wiring or its own cord. *Cutting accessory contacting a "live" wire may make exposed metal parts of the power tool "live" and could give the operator an electric shock.*

SPECIFIC DRILL SAFETY WARNINGS-SAFETY INSTRUCTIONS WHEN USING LONG

DRILL BITS

- a) **Never operate at higher speed than the maximum speed rating of the drill bit.** *At higher speeds, the bit is likely to bend if allowed to rotate freely without contacting the workpiece, resulting in personal injury.*
- b) **Always start drilling at low speed and with the bit tip in contact with the workpiece.** *At higher speeds, the bit is likely to bend if allowed to rotate freely without contacting the workpiece, resulting in personal injury.*
- c) **Apply pressure only in direct line with the bit and do not apply excessive pressure.** *Bits can bend causing breakage or loss of control, resulting in personal injury.*

ADDITIONAL SAFETY WARNINGS FOR IMPACT DRILL

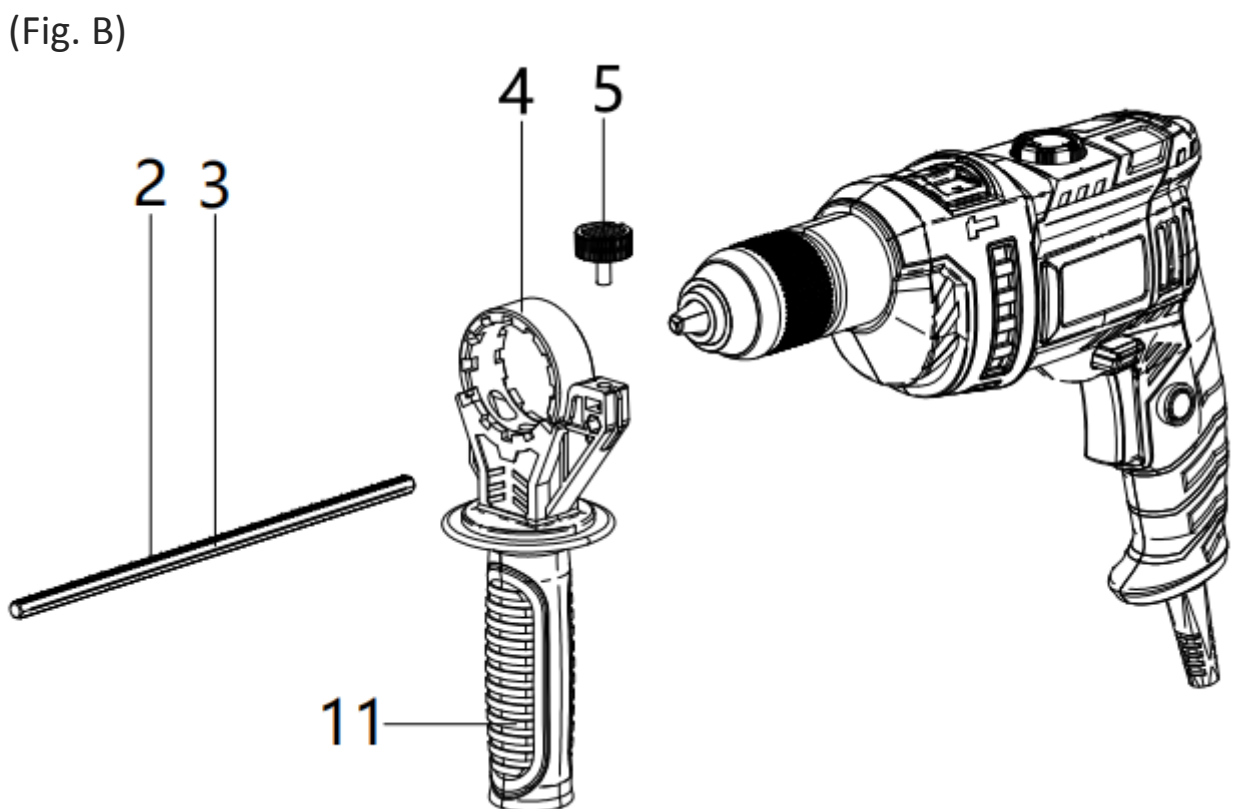
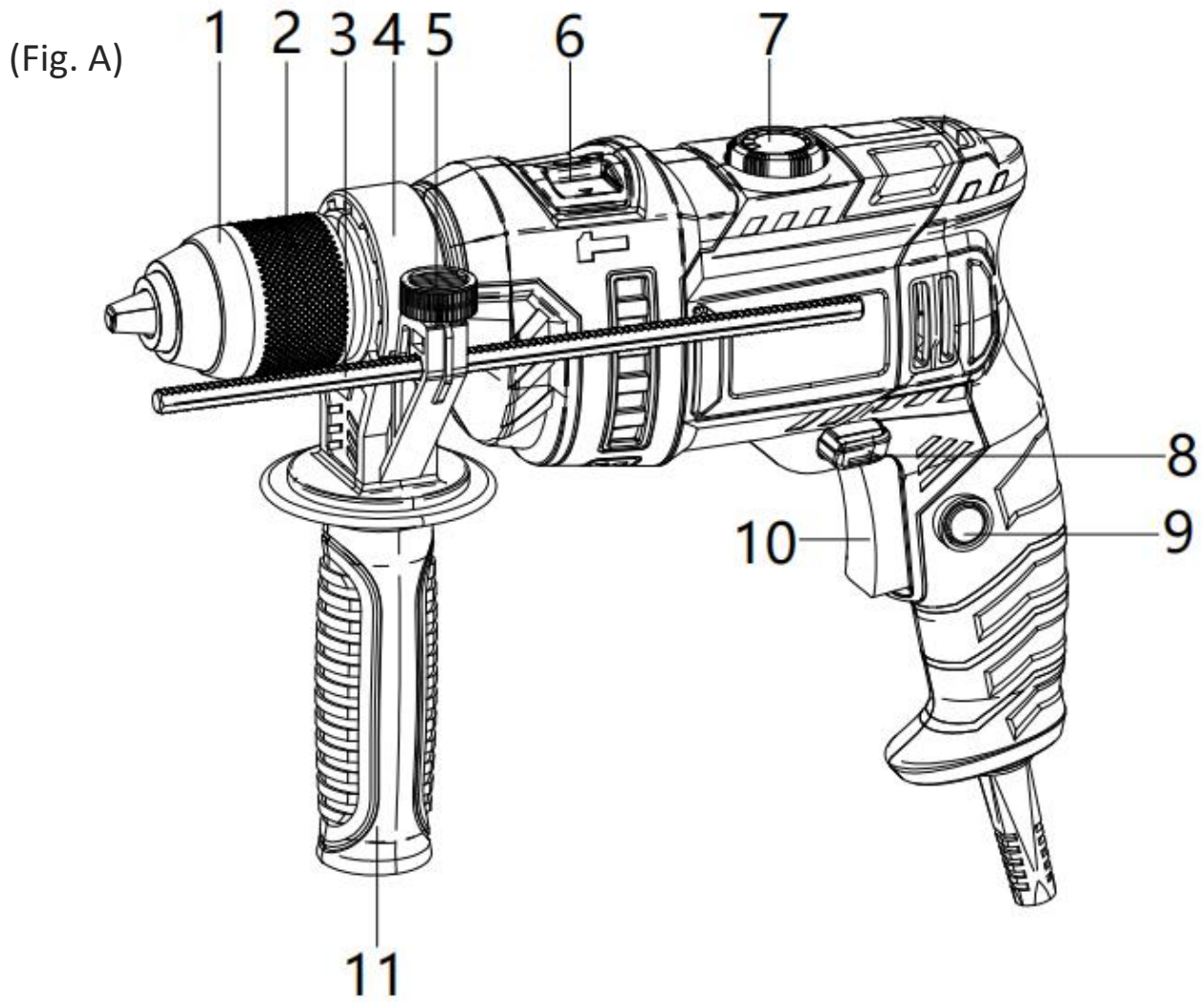
- a) **Use appropriate detection equipment to track down concealed supply lines or consult the local utility companies.** *Contact with electrical lines may result in fire and electric shock. Damaging a gas line may lead to an explosion. Penetrating a water line causes property damage and may cause an electric shock.*
- b) **Vibrations can be harmful to the human hand-arm system.** *Keep the vibration exposure time to a minimum.*
- c) **During operation hold onto the power tool with both hands.** *Make sure that you stand firmly on the ground. It is safer to handle the power tool with two hands.*
- d) **Secure the workpiece.** *The grip of tensioning devices or a vice is more secure than holding the workpiece only by hand.*
- e) **Before starting to work, always make sure that the insertion tool is firmly clamped inside the drill chuck.** *Insertion tools that are not locked in place could be catapulted out of the power tool upon switch-on and lead to injuries.*
- f) **Before switching on the power tool, ensure that the insertion tool can move freely.** *If the device is switched on with a jammed insertion tool, the resulting forces can be extreme causing the device to kick out sideways.*
- g) **Immediately switch off the power tool if the insertion tool gets jammed.** *The power tool can lash out to the side owing to the forces that build up consequently.*
- h) **Regularly check the drill chuck for wear or damage.**
- i) **Only start a percussive power tool while holding it against a workpiece (wall, ceiling, etc.).**
- j) **Wait until the power tool has come to a standstill, before putting it down.**
- k) **For any work on the device, as well as during transport or storage, set the switch for the rotational direction to centre position (locked).** *This prevents unintentional starting of the power tool.*

RESIDUAL RISK

Even if properly operating and handling this electric tool, some residual risks will remain. Due to its construction and build, this electric tool may present the following hazards,

- a) Ear damage if working without wearing ear protection
- b) Eye damage if suitable eyes protection is not worn.
- c) The inserting tool might still be hot after the application. Burn hazard when touching the inserting tool. Do not touch the inserting tool barehanded. Wear protective gloves!
- d) Damage to your health caused by swinging your hands and arms when operating the electric tool for longer periods of time or if the too is not held or maintained properly

PRODUCT DESCRIPTION




OVERVIEW (Fig.A-B)

1. Quick-release chuck
2. Teeth on the depth stop
3. Depth stop
4. Mounting ring for the additional handle
5. Screw for the depth stop
6. Function selector switch
7. Rotational speed preselector adjusting wheel
8. Rotation direction switch
9. Locking button for ON/OFF switch
10. On/Off switch
11. Additional handle

INTRODUCTION

The operating instructions contain important information on safety, use and disposal. It is essential that you read the instructions before assembling, operation and maintaining the product. Use the product only as described and for the applications specified. Keep this manual safely and in the event that the product is passed on, hand over all documents to the third party or any future owner.

TECHNICAL DATA

Rated voltage	230V~, 50Hz
Rated power	750W
Rated no-load speed/ n0	0-3000/min
Rated stroke rate	Max. 48000 BPM
Max. torque	10Nm
Chuck capacity	Max. Φ 13mm
Max. drill diameter	12mm for steel 25mm for wood 14mm for concrete
Protection class:	II/ 
Noise emission value according to EN 62841-2-1	
Sound pressure level L_{pA}	90.7 dB(A)
Sound power level L_{WA}	101.7 dB(A)
Uncertainty K	5dB
Vibration emission value according to EN EN 62841-2-1	
$a_{h,ID}$	$9.345m/s^2$
Uncertainty K	$1.5 m/s^2$
$a_{h,D}$	$4.600m/s^2$
Uncertainty K	$1.5 m/s^2$

- The declared vibration total values and the declared noise emission values have been measured in accordance with a standard test method and may be used for comparing one tool with another.
- The declared vibration total values and the declared noise emission values may also be used in a preliminary assessment of exposure.

WARNING

- The vibration and noise emissions during actual use of the power tool can differ from the declared values depending on the ways in which the tool is used especially what kind of workpiece is processed; and
- It is necessary to identify safety measures to protect the operator that are based on an estimation of

exposure in the actual conditions of use (taking account of all parts of the operating cycle such as the times when the tool is switched off and when it is running idle in addition to the trigger time).

INTENDED USE

The appliance is suitable for:

1. Impact-drilling into brickwork, concrete and stone
2. Drilling into stone, wood and metal


Any other usage or modification of the appliance is deemed to be improper and carries a significant risk of accidents.

The manufacturer accepts no responsibility for damage(s) attributable to misuse. Not for commercial use.

SCOPE OF DELIVERY

- 1 x Hammer drill
- 1x Additional handle
- 1x Depth stop
- 1x Carrying case
- 1x Instruction manual

BEFORE USE

 **WARNING! Always switch off the appliance and remove the power plug before starting any work on the appliance!**

ADDITIONAL HANDLE

For safety reason, you should only use this appliance with the additional handle attached.

1. Loosen the strap on the additional handle (11) by turning it clockwise.
2. Push the additional handle (11) in the direction of the quick release chuck (1).
3. Turn the additional handle (11) to the required position.
4. The locking positions on the additional handle (11) must now be pushed over the locking pin on the spindle of the appliance.
5. Turn the additional handle (11) anticlockwise again to tighten it.
6. Move the additional handle (11) into the various locking positions depending on your working position. Undo and lock the additional handle (11) as described previously.

DEPTH STOP

1. Undo the screw on the depth stop (5).
2. Insert the depth stop (3) into the additional handle (11).
3. Make sure that the teeth on the depth stop (2) point upwards and downwards.
4. Pull the depth stop (3) out until the distance between the tip of the drill and the tip of the depth stop corresponds with the required drilling depth.
5. Tighten the screw on the depth stop (5) to lock the depth stop (3) into place.

CHANGING TOOLS

1. Turn the quick-release chuck (1) towards RELEASE ▶ to open it.
2. Insert the desired tool into the quick-release chuck (1).
3. Turn the quick-release chuck (1) towards ◀ GRIP to tighten the tool.

OPERATION

SELECT OPERATING MODE

Push the function selector switch (6) so that it engages at the desired mode.

Drilling 

Impact Drilling 

SELECT ROTATION DIRECTION

1. The rotation direction switch may only be used/adjusted if the appliance is at a standstill.
2. Select the rotation direction by pressing the rotation direction switch (8) towards the left or right

PRESELECTING THE ROTATION SPEED

You can use the rotational speed preselector adjusting wheel to preselect the rotational speed. The speed you select depends on the material to be processed. Work out the right setting by carrying out a practice test.

SWITCHING ON/OFF

1. Connect the appliance to the power supply.
2. Press the On/Off switch (10) to switch on.
3. Release the On/Off switch (10) to switch off.

SWITCHING TO CONTINUOUS OPERATION

Press the On/off switch (10). Lock it in the pressed position with the on/off switch lock button (9).

SWITCHING OFF CONTINUOUS OPERATION

Press the On/off switch (10) and release it again.

CLEANING & MAINTENANCE

WARNING! RISK OF INJURY!

1. Pull the mains plug before any work on maintenance or repair.
2. Repair and servicing work not described in this manual should always be carried by the Service Centre. Use only the original parts.
3. The following cleaning and servicing should be done regularly. This will ensure a long and reliable

service life.

4. Do not spray the appliance with water and do not immerse it in water. Electric Shock hazard.
5. Keep clean the ventilation slots, motor housing and handles of the appliance. Use a damp cloth or a brush. Do not use cleaning agents or solvents. You may otherwise irreparable damage the appliance.
6. Always clean the appliance after completion of work.

STORAGE AND TRANSPORTATION

STORAGE

1. Switch off and unplug the appliance before storage.
2. Store the appliance in a dry and secure place well out of reach of children.
3. Store the appliance and all the individual pieces in the provided plastic case to ensure not to lose any part.

TRANSPORT

Before transporting, observe the followings:

1. Switch off and unplug the appliance.
2. Allow the appliance to cool down.
3. Put the appliance and accessories into the case.
4. Hold the handle of the case for transportation carefully.

REPLACEMENT PARTS /ACCESSORIES



WARNING! Only use accessories specified in the operating manual. Using the accessories other than those specific in the operating manual may cause a risk of injury. Only get the accessories listed below from the Service Centre.

DISPOSAL



To help the environment, please dispose of the product properly when it has reached the end of its useful life and not in the household waste. Information on collection points and their opening hours can be obtained from your local authority

DECLARATION OF CONFORMITY



Carrefour Marchandises Internationales
93, avenue de Paris
91342 Massy
France

Herewith we declare that the product

750W Impact Drill

Model number: CID750W(DY94279)

S/N: 20211127844-20211129293

Is in conformity with the following European Directives

2006/42/EC

2014/30/EU

2011/65/EU & (EU) 2015/863

And the harmonized standards

EN 62841-1:2015

EN 62841-2-1:2018+A11:2019

EN 55014-1:2017/A11:2020

EN 55014-2:1997/A2:2008

EN 55014-2:2015

EN 61000-3-2:2014

EN IEC 61000-3-2:2019

EN 61000-3-3:2013

EN 61000-3-3:2013/A1:2019

Manufacturer and name of the authorised representative of the technical documentation

Signature

Place and date

WARRANTY

The manufacturer guarantees the product against defects in material and workmanship for a period of 2 years from the date of the original purchase. The warranty only applies if the product is for household use. The warranty does not cover breakdowns due to normal wear and tear.

The manufacturer agrees to replace parts identified as defective by the designated distributor. The manufacturer does not accept responsibility for the replacement of the machine, in whole or in part, and/or ensuing damage.

The warranty does not cover breakdowns due to:

- insufficient maintenance.
- abnormal assembly, adjustment or operations of the product.
- parts subject to normal wear and tear.

The warranty does not extend to:

- shipping and packaging costs.
- using the tool for a purpose other than that for which it was designed.
- the use and maintenance of the machine done in a manner not described in the user manual.

Due to our policy of continuous product improvement, we reserve the right to alter or change specifications without notice. Consequently, the product may be different from the information contained therein, but a modification will be undertaken without notice if it is recognized as an improvement of the preceding characteristic.

READ THE MANUAL CAREFULLY BEFORE USING THE MACHINE.

When ordering spare parts, please indicate the part number or code, you can find this in the spare parts list in this manual. Keep the purchase receipt; without it, the warranty is invalid. To help you with your product, we invite you to contact us by phone or via our website:

+33 (0)9.70.75.30.30

<https://services.swap-europe.com/contact>

You must create a "ticket" via the web platform.

Register or create your account.

Indicate the reference of the tool.

Choose the subject of your request.

Describe your problem.

Attach these files: invoice or sales receipt, photo of the identification plate (serial number), photo of the part you need (for example: pins on the transformer plug which are broken).



PRODUCT FAILURE

WHAT TO DO IF MY MACHINE BREAKS DOWN?

If you bought your product in a store:

- Make sure that your machine is complete with all accessories supplied, and clean! If this is not the case, the repairer will refuse the machine.
- Go to the store with the complete machine and with the receipt or invoice.

If you bought your product on a website:

- Make sure that your machine is complete with all accessories supplied, and clean! If this is not the case, the repairer will refuse the machine.
- Create a SWAP-Europe service ticket on the site: <https://services.swap-europe.com> When making the request on SWAP-Europe, you must attach the invoice and the photo of the nameplate (serial number).

Contact the repair station to make sure it is available before dropping off the machine.

Go to the repair station with the complete machine packed, accompanied by the purchase invoice and the station support sheet downloadable after the service request is completed on the SWAP-Europe site

Please keep your original packaging to allow for after-sales service returns or pack your machine with a similar cardboard box of the same dimensions.

For any question concerning our after-sales service you can make a request on our website <https://services.swap-europe.com>

Our hotline remains available at +33 (9) 70 75 30 30.



WARRANTY EXCLUSIONS

THE WARRANTY DOES NOT COVER:

- Start-up and setting up of the product.
- Damage resulting from normal wear and tear of the product.
- Damage resulting from improper use of the product.
- Damage resulting from assembly or start-up not in accordance with the user manual.
- Breakdowns related to carburetion beyond 90 days and fouling of carburetors.
- Periodic and standard maintenance events.
- Actions of modification and dismantling that directly void the warranty.
- Products whose original authentication marking (brand, serial number) has been degraded, altered or withdrawn.
- Replacement of consumables.
- The use of non-original parts.
- Breakage of parts following impacts or projections.
- Accessories breakdowns.
- Defects and their consequences linked to any external cause.
- Loss of components and loss due to insufficient screwing.
- Cutting components and any damage related to the loosening of parts.
- Overload or overheating.
- Poor power supply quality: faulty voltage, voltage error, etc.
- Damages resulting from the deprivation of enjoyment of the product during the time necessary for repairs and more generally the costs related to the immobilization of the product.
- The costs of a second opinion established by a third party following an estimate by a SWAP-Europe repair station
- The use of a product which would show a defect or a breakage which was not the subject of an immediate report and/or repair with the services of SWAP-Europe.
- Deterioration linked to transport and storage*.
- Launchers beyond 90 days.
- Oil, petrol, grease.
- Damages related to the use of non-compliant fuels or lubricants.

* In accordance with transport legislation, damage related to transport must be declared to carriers within 48 hours maximum after observation by registered letter with acknowledgement of receipt.

This document is a supplement to your notice, a non-exhaustive list.

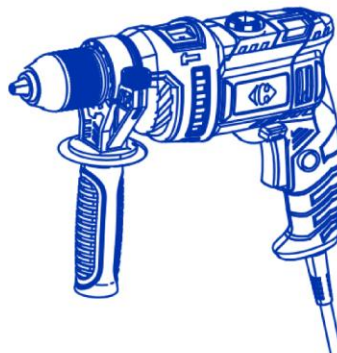
Attention: all orders must be checked in the presence of the delivery person. In case of refusal by the delivery person, it you must simply refuse the delivery and notify your refusal.

Reminder: the reserves do not exclude the notification by registered letter with acknowledgement within 72 hours.

Information:

Thermal devices must be wintered each season (service available on the SWAP-Europe site). Batteries must be charged before being stored.

Staple here your receipt



Product	Ref	EAN
750W IMPACT DRILL	DY94279	3616474461918



EN

For any comments or suggestions

Carrefour Consumer service
– CMI
TSA 91431

91343 MASSY Cedex
France
www.carrefour.fr

 **N° Cristal** 09 69 39 70 00

APPEL NON SURTAXE

More information on
www.mycarrefourdocs.com