

Original instructions

Garden shredder

YT5461-02 / BGS PRO 2800-17



DESCRIPTION OF THE SYMBOLS

The use of symbols in this manual is intended to draw your attention to possible risks. The safety symbols and the explanations that accompany them must be perfectly understood. The warnings in themselves do not remove the risks and cannot replace correct actions for preventing accidents.



This symbol, marking a point of safety, indicates a caution, warning or danger. Ignoring this warning can result in an accident to yourself or others. To limit the risks of injury, fire or electrocution, always follow the recommendations indicated.



Read operator's manual

Before use, refer to the corresponding paragraph in the present manual.



Conforms to applicable safety standards.



Wear eye and hearing protection.



Wear protective gloves



Do not use as a step



Don't expose to rain.



Keep bystanders away.

Danger of injury from flying parts! Always maintain a sufficiently safe distance. Beware of thrown objects. The distance between the machine and bystanders should be at least 15 meters.



Remove plug from the mains immediately if the cable is damaged or cut.



Danger - Rotating blades. Keep hands and feet out of openings while machine is running.



Warning: Switch off and remove plug from mains before adjusting, cleaning or maintenance, or if cable is entangled or damaged.



Waiting until all machine components have completely stopped before touching them.



Recycle unwanted materials instead of disposing of them. All appliances and packaging should be sorted and tendered at a regional recycling centre into to be processed in an ecological manner.

General instructions for shredder/chippers

IMPORTANT

READ CAREFULLY BEFORE USE

KEEP FOR FUTURE REFERENCE

Safe operating practices for powered shredder/chipper.

Training

- a) Read the instructions carefully. Be familiar with the controls and the correct use of the machine.
- b) Never allow children, persons with reduced physical, sensory or mental capabilities or lack of experience and knowledge or people unfamiliar with these instructions to use the machine. Local regulations can restrict the age of the operator.
- c) Keep in mind, that the operator or user is responsible for accidents or hazards occurring to other people or their property.

Preparation

- a) Obtain ear protection and safety glasses. Wear them at all times while operating the machine.
- b) While operating the machine always wear substantial footwear and long trousers. Do not operate the machine when barefoot or wearing open sandals. Avoid wearing clothing that is loose fitting or that has hanging cords or ties.
- c) Operate the machine in a recommended position and only on a firm, level surface.
- d) Do not operate the machine on a paved or gravel surface where ejected material could cause injury.
- e) Before using, always visually inspect to see, that the shredding means, shredding means bolts and other fasteners

are secure, the housing is undamaged and that guards and screens are in place. Replace worn or damaged components in sets to preserve balance. Replace damaged or unreadable labels.

- f) Before use check the supply and extension cord for signs of damage or aging. If the cord becomes damaged during use, disconnect the cord from the supply immediately. **DO NOT TOUCH THE CORD BEFORE DISCONNECTING THE SUPPLY.** Do not use the machine if the cord is damaged or worn.
- g) Never operate the machine while people, especially children, or pets are nearby.

Operation

- a) Before starting the machine, make certain that the feeding chamber is empty.
- b) Keep your face and body away from the feed intake opening.
- c) Do not allow hands or any other part of the body or clothing inside the feeding chamber, discharge chute, or near any moving part.
- d) Keep proper balance and footing at all times. Do not overreach. Never stand at a higher level than the base of the machine when feeding material into it.
- e) Always stand clear of the discharge zone when operating this machine.
- f) When feeding material into the machine be extremely careful that pieces of metal, rocks, bottles, cans or other foreign objects are not included.
- g) If the cutting mechanism strikes any foreign objects or if the machine should start making any unusual noise or vibration, immediately shut off the power source and allow the machine to stop. Disconnect the machine from the supply and take the following steps before restarting and operating the machine:

-
- i. Inspect for damage;
 - ii. Replace or repair any damaged parts;
 - iii. Check for and tighten any loose parts.
- h) Do not allow processed material to build up in the discharge zone; this may prevent proper discharge and can result in kickback of material through the feed intake opening.
- i) If the machine becomes clogged, shut-off the power source and disconnect the machine from supply before cleaning debris.
- j) Never operate the machine with defective guards or shields, or without safety devices, for example debris collector in place.
- k) Keep the power source clean of debris and other accumulations to prevent damage to the power source or possible fire.
- l) Do not transport this machine while the power source is running.
- m) Stop the machine, and remove plug from the socket. Make sure that all moving parts have come to a complete stop
- i. Whenever you leave the machine.
 - ii. Before cleaning blockages or unclogging chute.
 - iii. Before checking, cleaning or working on the machine.
- n) Do not tilt the machine while the power source is running.
- o) Always be sure of the footing on slopes and to walk, never run.

Maintenance and storage

- a) When the machine is stopped for servicing, inspection, or storage, or to change an accessory, shut off the power source, disconnect the machine from the supply and make sure that all moving parts are come to a complete stop. Allow the machine to cool before making any inspections, adjustments, etc. Maintain the machine with care and keep it clean.
- b) Store the machine in a dry place out of the reach of children.
- c) Always allow the machine to cool before storing.
- d) When servicing the shredding means be aware that, even though the power source is switched off due to the interlock feature of the guard, the shredding means can still be moved.
- e) Replace worn or damaged parts for safety. Use only genuine replacement parts and accessories.
- f) Never attempt to override the interlocked feature of the guard.
- g) Switch-off the machine before attaching or removing the bag.
- h) If the supply cord is damaged, it must be replaced by the manufacture, its service agent or similarly qualified persons in order to avoid a hazard.

Electric safety

- **Use only extension cords approved for outdoor work and protected against splashing. The extension cable must have conductors of at least 1,5 mm² for a cable length less than 25m and 2,5 mm² if the length exceeds 25m. Before use, always unroll the cable reel. Check the condition of the cable.**
- **The appliance should be supplied via a residual current device (RCD) with a tripping current of not more than 30 mA.**

- Do not pull on the cable to unplug. Protect the cable from heat, oil and sharp edges.

Intended use

Garden shredder has been designed for shredding most garden waste, including pruning, hedge trimmings, twigs and other organic garden waste. The shredded waste is ideal for composting purposes or to obtain a smaller volume of waste for easy disposal.



You must not introduce stones, glass, metal, bone, and plastic or fabric waste into the appliance.

In order to avoid the blades wearing too quickly, do not shred roots or parts of plants still containing soil.

Any other use that is not expressly permitted in these instructions can damage the appliance and represent a danger to the user.

Technical data

Model:	YT5461-02
Mains voltage / frequency:	220-240 V ~ 50 Hz
Rated power	S1: 2300 W; 2800W (P40)
Maximum speed	44 min ⁻¹
Branch diameter:	Max. 45 mm
Weight:	27.5 kg
Sound pressure level	84.4 dB(A) K=3 dB(A)
Sound power level :	95 dB(A)
Protection class	I
Degree of protection	IPX4

Explanation of duty type 2800W (P40): continuous-operation periodic duty

Continuous-operation periodic duty 2800W (P40), followed by an indication of the duration of the duty as stated on the rating label.

It means that the machine can be continuously operated at a sequence of identical duty cycles, each cycle consisting of a time of operation (40%) at constant load (2800W) and a time of operation (60%) at no-load. There is no time de-energized and at rest.

Noise Information

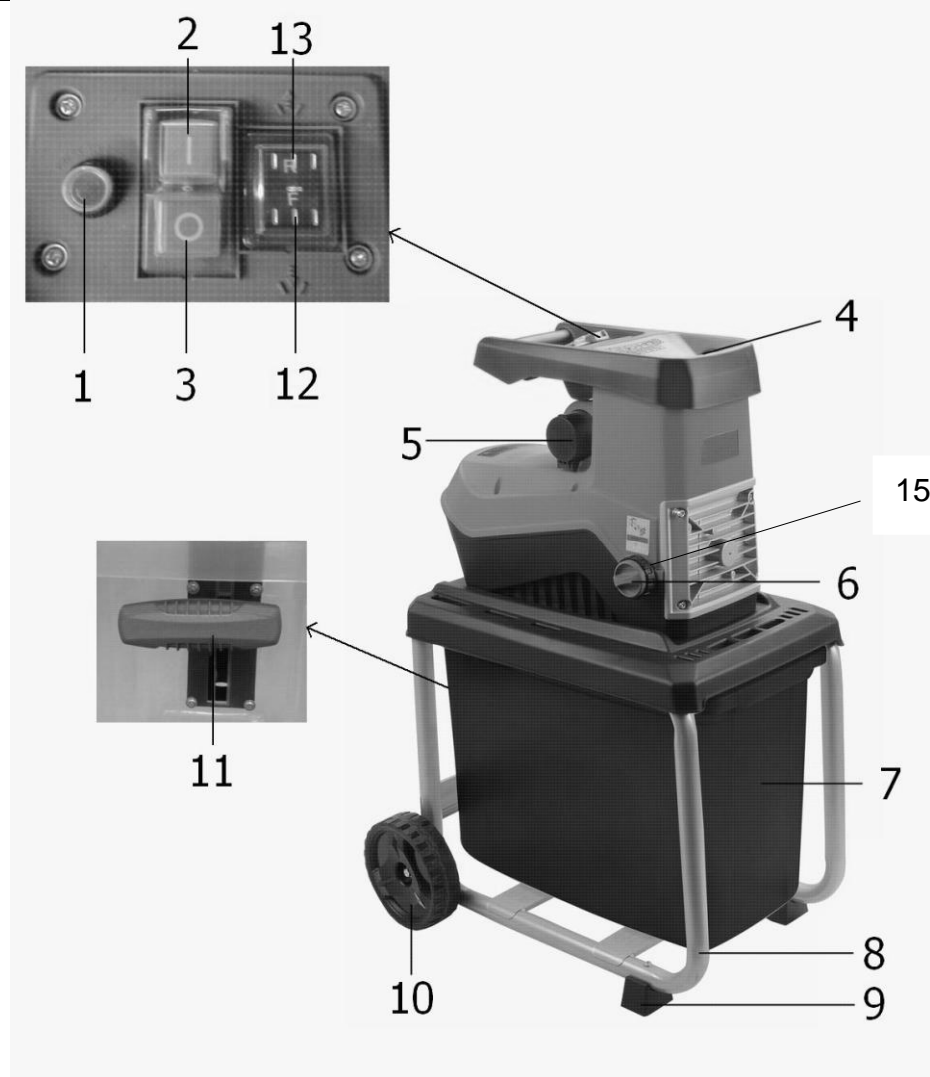
Measured sound values determined according to EN 50434: 2014.

The noise figures quoted are emission levels and are not necessarily safe working levels. Whilst there is a correlation between the emission and exposure levels, this cannot be used reliably to determine whether or not further precautions are required. Factors that influence the actual level of exposure of work-force include the characteristics of the work room, the other sources of noise, etc. i.e. the number of machines and other adjacent processes, and the length of time for which an operator is exposed to the noise. Also the permissible

exposure level can vary from country. This information, however, will enable the user of the machine to make a better evaluation of the hazard and risk.

Wear hearing protection!

Parts identification



14



Pic1

1. Over load protection	2. On switch
3. off switch	4. Feeding tunnel
5. Electric plug	6. Adjusting knob
7. Collection box	8. Base frame
9. Supporting wheel	10. Rear wheel

11. lock handle	12.13.reversing switch
14: Accessory	15.Locking knob

Assembly (Fig. 2)

Scope of delivery

1x Instruction manual

1x Spanner (5mm)

1x Silent shredder

1x Collection box

1x Base frame

2x supporting Wheel set

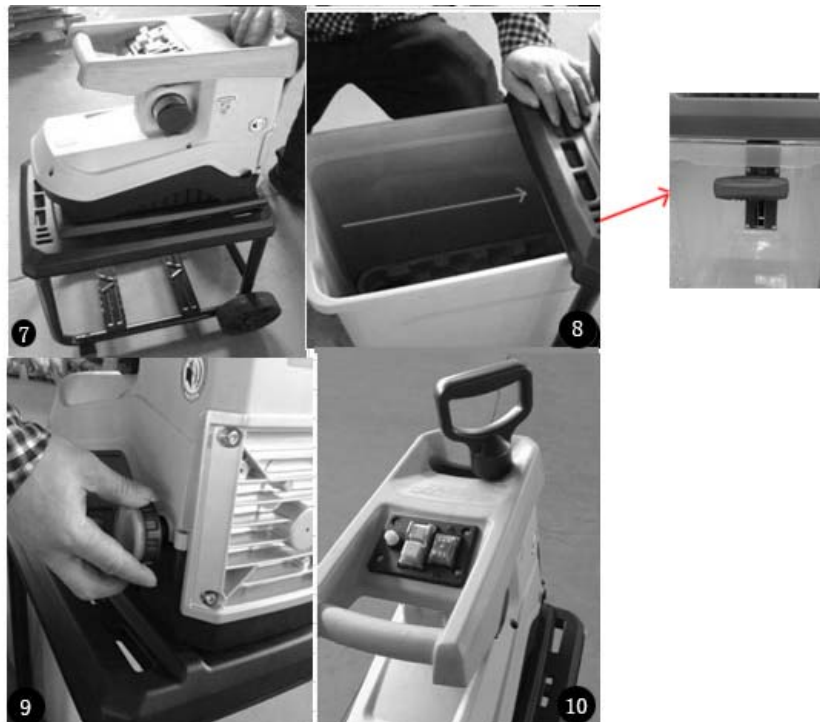
2x front wheel set

1x Small parts bag

1x Clear material rod

1. Take all parts out of the package. You will find all the parts and accessory. (Fig.2)
2. Fit the supporting wheel sets to the base frame with the aid of two screws (M6*45). (Fig. 3)
3. Use the other spanner (The Spanner was not included in accessory, Customer should prepare by themselves) to mount wheels to the base frame using two wheel shafts, two grommets, two spring grommets and two screws(M8). Assemble cap by pushing in on by hand. (Fig.5)
4. Stand and put hands in position as shown in (Fig. 6). Lay the motor unit on the base frame by placing protruding supports of the motor. Then fixed the motor and the base frame with 6 screws. (you can find in accessory)
- 5 Slide the collection box back to the base frame. Ensure that the collection box runs above the guide rails. (Fig. 8) Push the collection box into the base frame, Then Lock the collection box with lock handle in position by pushing upwards. (Fig. 8)
- 6 Install the adjuster in a clockwise. (Fig.9)





Operation

⚠ **Attention!** Before starting up the machine, familiarize yourself with its proper use by carefully reading through the instructions for use. **Attention!** Before starting up the machine, you must always check whether it has been properly closed.

⚠ **DANGER!** The appliance is absolutely **FORBIDDEN** to be used without motor box fixed in place.

Always use the correct supply voltage

The power supply voltage must match the information quoted on your shredder's identification plate. Shredders with a rating of 230 V can only be connected to a 230 V mains supply.

The shredder shall be supplied via a residual current device (RCD) with a tripping current of not more than 30mA

An extension cable with a cross section that is too small causes a distinct reduction in the performance capabilities of the machine. For cables up to 25 m in length, a cross section of at least $3 \times 1.5 \text{ mm}^2$ is required; for cables more than 25 m in length, the cross section must be at least 2.5 mm^2 .

On/off switch

Press the green button (2) to switch on the shredder.

Press the red button to (3) to switch it off.

Note: This machine is equipped with an electromagnetic switch to prevent it from being unexpectedly switched on when power source recovered.

Reversing switch

Caution! The reversing switch can only be operated when the shredder is switched off.

Position F (12)

The reversing switch has been set to position F. The chopping knife will pull in the material and chop it. The switch is set to position R after the manufacturer's test.

Position R (13)

When the chopping knife is jammed so that the motor cannot keep running, first press the red button of the on/off switch to stop the motor. Then completely turn the reversing switch to left position R and press the on/off switch (the green button). Keep the green button of the on/off switch pressed, the chopping knife will rotate into the reverse direction and release the material to enable you to remove it. When you release the on/off switch the shredder will stop automatically.

Overload protection

If the appliance is overloaded, it stops automatically. Overload (e.g. blocking up of the chopping knife) will lead to a standstill of the machine after a few seconds. To protect the motor from getting damaged, the overload switch will automatically cut off the mains supply. Wait at least 1 minute before restarting by first pressing the reset button (1) and then the on/off switch.

If the chopping knife is blocked turn the reversing switch to left position R before switching on the shredder again.

Feeding

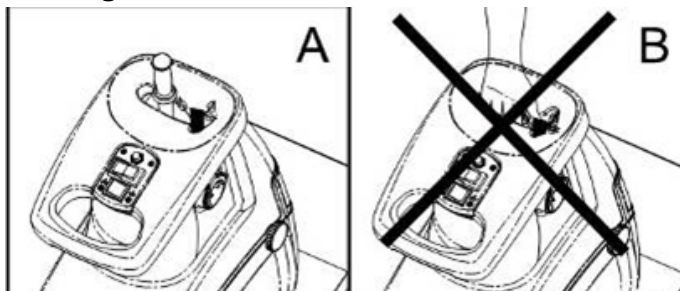


Fig 11

A feeder is provided to aid feeding less bulky material such as small twigs, leaves, other garden waste and vegetation into the Feed intake opening. (Fig.11A)

- 1 Load the material into the Feed intake opening.
- 2 Insert the feeder into the Feed intake opening and push the material onto the blade disc.
- 3 Wait until all the material has been shredded before adding more material.



WARNING:

Your fingers must never enter the feeding funnel. Never use this machine if the top hopper is not fitted. Do not overreach. (Fig 11B)

Feed the material to be chopped into the right side of the feed intake opening. The material is automatically pulled in by the chopping knife.

Caution!

Longer material standing out from the machine could lash out when being pulled in by the chopping knife! Keep a safety distance!

Warning!

Always use the feeder if you try to push the material into the feeding tunnel. Do not use your hands directly! Keep the feeder well after use.

Only insert as much material as will not block up the feed intake opening.

Chop garden waste that has been stored for some days and is wilted and damp alternately with branches.

This will prevent the chopping knife from getting blocked up.

Do not fill into the shredder any soft material such as kitchen waste instead of composting it.

Widely branched material with leaves must be completely chopped before any new material is fed in.

Take care that the chopped material can freely fall from the discharge chute – danger of backing up!

The ventilation slots must not be covered by the waste bag or the chopped material.

Emptying the collection box

The level of shredded material debris in the collection box can be checked by looking through the notches on the upper face of the base frame. Always empty the collection box in good time to prevent it from overflowing.

To empty it, proceed as follows:

- a) Switch off the device at the ON/OFF switch.
- b) Press the lock handle down.
- c) Release the collection box.
- D) Take the collection box out at the front.

PROCESS TO FOLLOW FOR THE CORRECT USE OF THE MACHINE

Adjusting the counter knife (Fig.12)

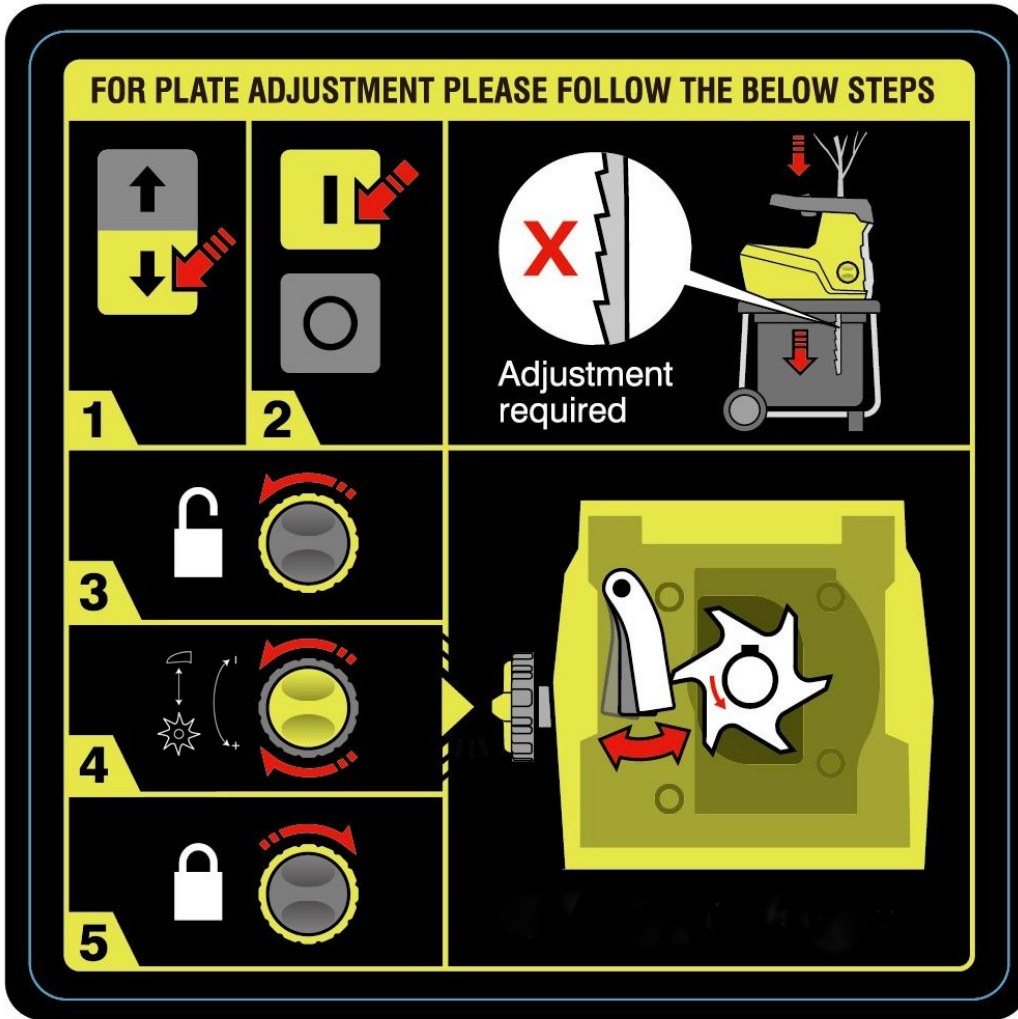




Fig.12

<p>1. Press the <u>down arrow</u> of <u>reversing switch</u></p> <p>2. press "I" switch to make the machine work.</p>	<p>Note: Do not feed the branch when adjusting the shredder.</p>
	
<p>3. Loosen the <u>locking knob</u> (black) counterclockwise</p>	<p>4. Adjust the <u>knob in red</u> very slowly clockwise until feeling a resistance</p>

	<p>(chopping knife touches the counter knife) (Fig.13)</p>
	
<p>5. Fasten <u>locking knob</u> in <u>black</u> clockwise to keep <u>adjusting knob</u> in place</p>	<p>6. Make a load test and check the branch can be crushed completely. If failure, restart from steps 1 to 6.</p>
	
<p>Note: do not fasten the adjustment knob to tight to not damage the counter-knife and the blade.</p>	

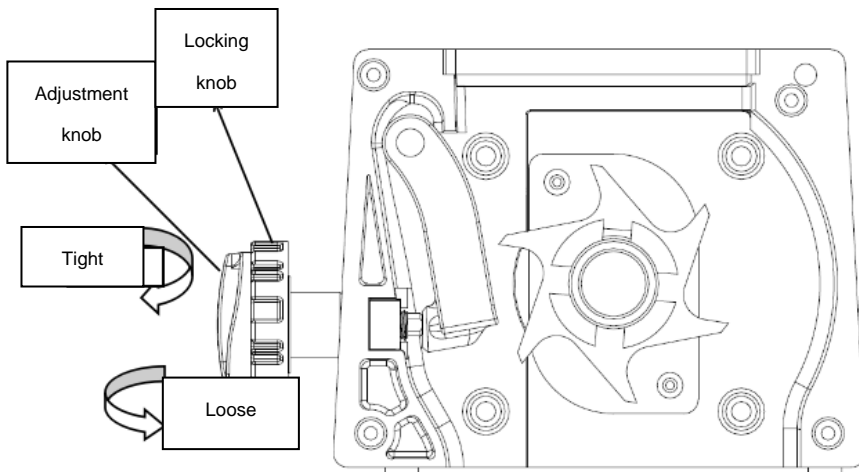


Fig .13

Troubleshooting

Trouble	Cause	Solution
The motor does not run	The overload protection has responded	Set the reversing switch to position R(13) and press the reset button, keep the on/off switch pressed to switch on the shredder for a short period. After the blocking has been removed, reset the reversing switch to position F(12)
	Power failure	Check the power supply cord, the plug and your house connection fuse and RCD.
	Safety switch on the collection box not locked in position	Ensure collection box is in position and locked.
The material to be chopped is not pulled in	The chopping knife is running backwards.	Change the direction of rotation.
	The material is jammed in the feeding funnel	Set the reversing switch to position R(13) and switch on the shredder. Pull the material from the feeding funnel. Re-feed thick branches such that the chopping knife does not immediately grasp the pre-cut notches again.
	The cutting blade is blocked	Set the reversing switch to position R(13) and switch on the shredder The chopping knife will now run backwards to release the blocked-up material.

Caution! Change the direction of rotation to the desired position after the shredder has come to a complete standstill.

Maintenance and storage

Take care of your machine and clean it regularly to obtain long-lasting efficiency and performance.

Keep the air vents clean and free from dust.

Use only a warm damp cloth and a soft brush to clean your machine.

Never wet or spray water on the machine.

Do not use any detergents or solvents as these could cause irreparable damage to your machine. Chemicals can destroy the plastic parts.

The tightness of the fastening screws of the undercarriage should be checked from time to time.

To protect the shredder from corrosion when storing it for a longer period, treat the chopping knife with some ecological oil.

When the machine is stopped for servicing, inspection, or storage, or to change any accessories, shut off the motor, **unplug the connection cable (to disconnect the electric unit from the power supply)**, make sure that all moving parts have come to complete stop. Allow the machine to cool down before making any inspections, adjustments, etc.

The shredded can be packed in the collection box for storage and transport. Follow below steps:

- a) Unlock the collection box by pushing the lock handle (11) downwards. (Fig. 8)
- b) remove the six screw on the under of base frame. Stand and put hands in position as shown in (Fig. 6)
- c) put the motor into the collection box slowly. (put the screw into the PE bag) (Fig 1)
- d) Remove the supporting wheel and two rear wheel from the base frame. (Fig 3.4)

Store the machine in a dry place. For extended storage periods, run the unit dry for a short time. Always allow the machine to cool down before storing it.

When servicing the chopping knife assembly be aware that, even though the motor will not start due to the interlock feature of the guard, the chopping knife assembly can still be moved by a manual starting mechanism.